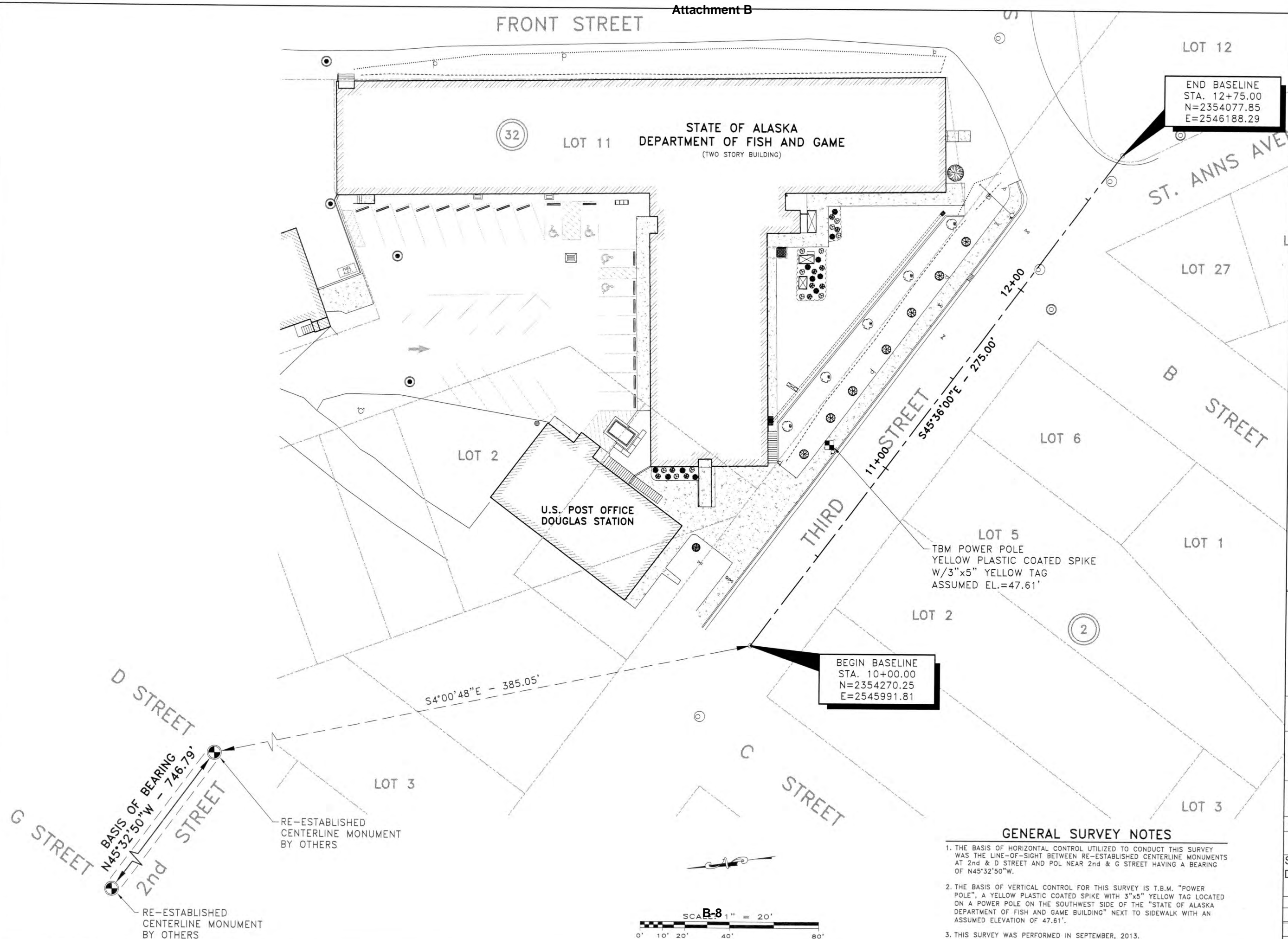


NWA-1325 Douglas Island Building Renovation I:\2013\131413.1\Civil Design\131413.1_Design-DWG PLOT February 14, 2014 dt: 1:31pm kpaustfren



Attachment B

CONTRACT
DOCUMENTS
February 17, 2014

ADDENDUM NUMBER

ATTACHMENT NUMBER

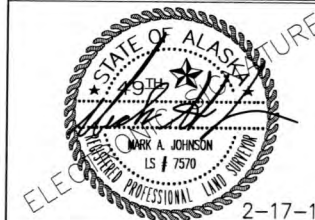
RECORD OF REVISIONS

No.	DATE	DESCRIPTION

STATE OF ALASKA
DEPARTMENT OF ADMINISTRATION

Division of General Services
Facilities Section
PO Box 11210
Juneau, AK 99811-0210

DOUGLAS ISLAND BUILDING RENOVATION



NORTHWIND ARCHITECTS, LLC
126 SEWARD ST
JUNEAU, ALASKA, 99801

R&M ENGINEERING, INC.
6205 GLACIER HIGHWAY
JUNEAU, ALASKA, 99801
PHONE: 907-780-6060
www.rmjuneau.com

IF THE ABOVE DIMENSION DOES NOT MEASURE ONE INCH
(1") EXACTLY, THIS DRAWING WILL HAVE BEEN ENLARGED
OR REDUCED, AFFECTING ALL LABELED SCALES.

DRAWN BY: M.L.L.

C1.2
SURVEY CONTROL
DIAGRAM

PROJECT DESIGNATION NUMBER

2014-0222-2436

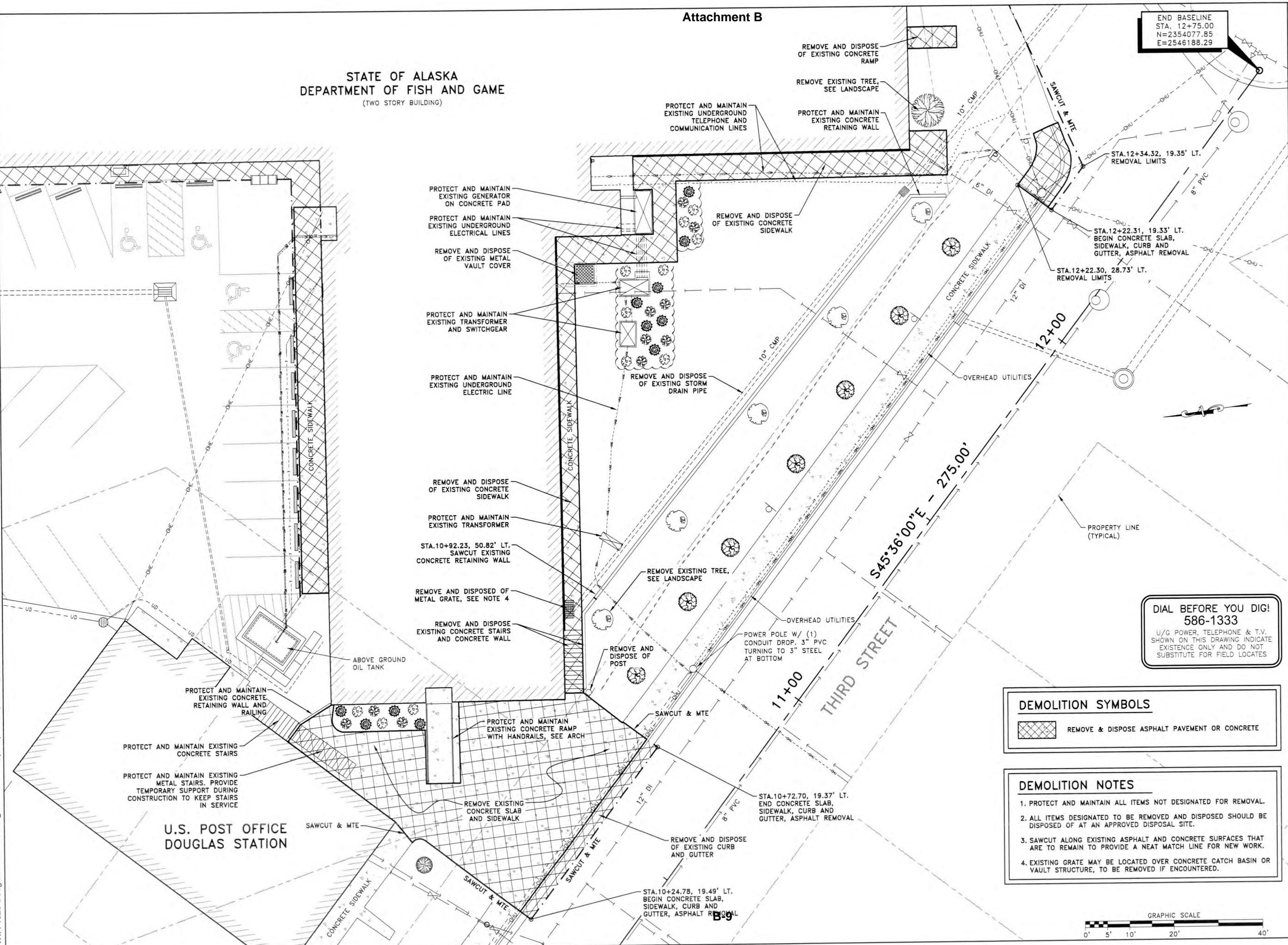
STATE	YEAR
ALASKA	2014

GENERAL SURVEY NOTES

1. THE BASIS OF HORIZONTAL CONTROL UTILIZED TO CONDUCT THIS SURVEY WAS THE LINE-OF-SIGHT BETWEEN RE-ESTABLISHED CENTERLINE MONUMENTS AT 2nd & D STREET AND POL NEAR 2nd & G STREET HAVING A BEARING OF N45°32'50"W.
2. THE BASIS OF VERTICAL CONTROL FOR THIS SURVEY IS T.B.M. "POWER POLE", A YELLOW PLASTIC COATED SPIKE WITH 3"x5" YELLOW TAG LOCATED ON A POWER POLE ON THE SOUTHWEST SIDE OF THE "STATE OF ALASKA DEPARTMENT OF FISH AND GAME BUILDING" NEXT TO SIDEWALK WITH AN ASSUMED ELEVATION OF 47.61'.
3. THIS SURVEY WAS PERFORMED IN SEPTEMBER, 2013.



NWA-1325 Douglas Island Building Renovation 1/20/13\\131413.1\\Civil Design\\131413.1_Design.DWG PLOT: February 14, 2014 at: 1:31pm kpuuallinen



CONTRACT DOCUMENTS
February 17, 2014

ADDENDUM NUMBER

ATTACHMENT NUMBER

RECORD OF REVISIONS

No.	DATE	DESCRIPTION
-----	------	-------------

STATE OF ALASKA
DEPARTMENT OF ADMINISTRATION

Division of General Services
Facilities Section
PO Box 11210
Juneau, AK 99811-0210

DOUGLAS ISLAND BUILDING RENOVATION

STATE OF ALASKA
49TH
ELECTRICITY PROFESSIONAL ENGINEER
Joseph M. Pusich
CE 8152

2-17-14

NORTHWIND ARCHITECTS, LLC
126 SEWARD ST
JUNEAU, ALASKA, 99801

R&M ENGINEERING, INC.
6205 GLACIER HIGHWAY
JUNEAU, ALASKA, 99801
PHONE: 907-780-6060
www.rmjuneau.com

IF THE ABOVE DIMENSION DOES NOT MEASURE ONE INCH (1") EXACTLY, THIS DRAWING WILL HAVE BEEN ENLARGED OR REDUCED, AFFECTING ALL LABELED SCALES.

DRAWN BY: M.L.L.

C1.3
SITE DEMOLITION PLAN

PROJECT DESIGNATION NUMBER
2014-0222-2436

STATE	YEAR
ALASKA	2014

END BASELINE
STA. 12+75.00
N=2354077.85
E=2546188.29

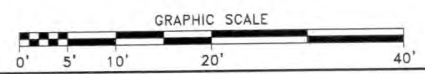
DIAL BEFORE YOU DIG!
586-1333
U/G POWER, TELEPHONE & T.V.
SHOWN ON THIS DRAWING INDICATE
EXISTENCE ONLY AND DO NOT
SUBSTITUTE FOR FIELD LOCATES

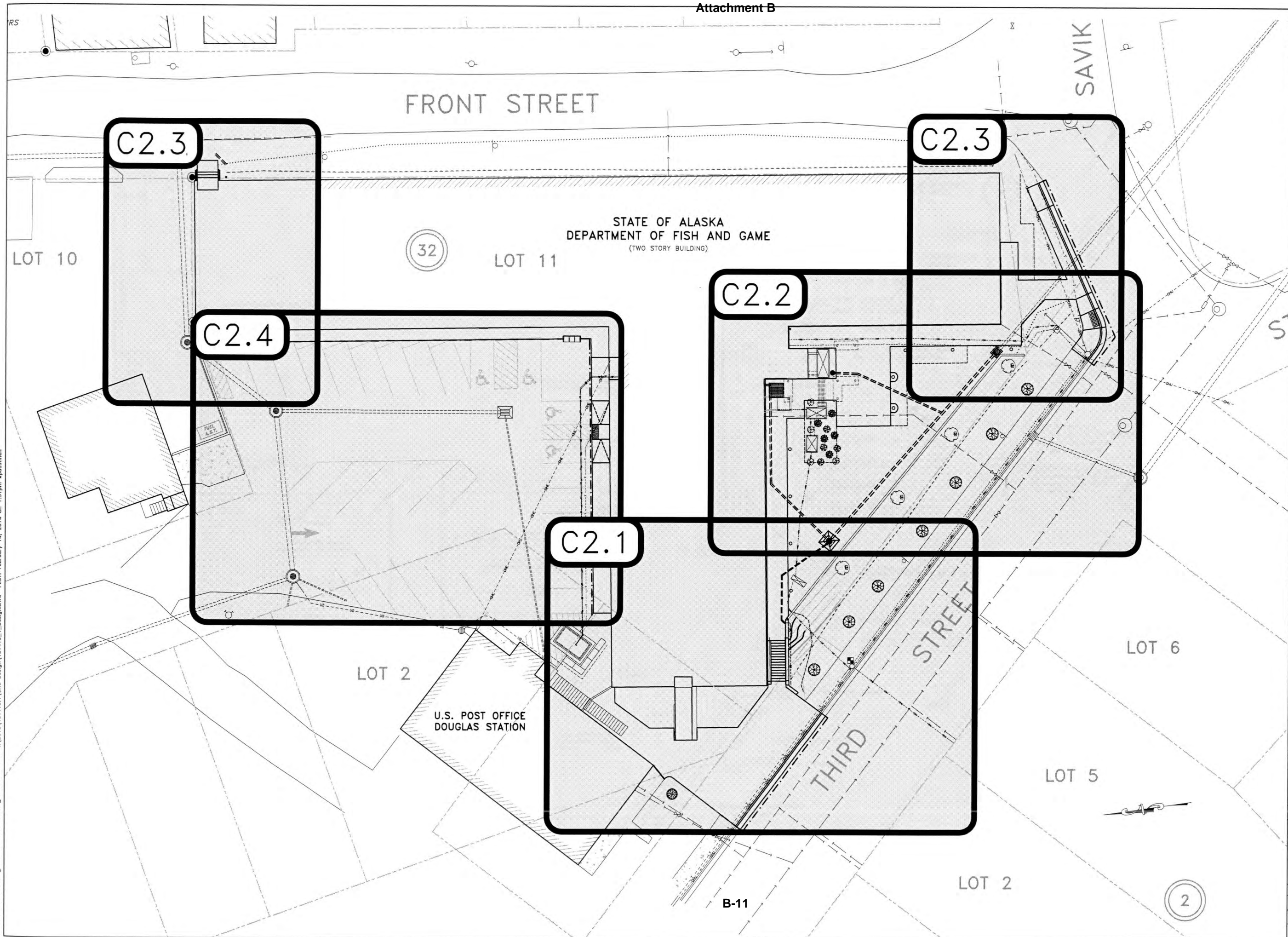
DEMOLITION SYMBOLS

REMOVE & DISPOSE ASPHALT PAVEMENT OR CONCRETE

DEMOLITION NOTES

1. PROTECT AND MAINTAIN ALL ITEMS NOT DESIGNATED FOR REMOVAL.
2. ALL ITEMS DESIGNATED TO BE REMOVED AND DISPOSED SHOULD BE DISPOSED OF AT AN APPROVED DISPOSAL SITE.
3. SAWCUT ALONG EXISTING ASPHALT AND CONCRETE SURFACES THAT ARE TO REMAIN TO PROVIDE A NEAT MATCH LINE FOR NEW WORK.
4. EXISTING GRATE MAY BE LOCATED OVER CONCRETE CATCH BASIN OR VAULT STRUCTURE, TO BE REMOVED IF ENCOUNTERED.





CONTRACT
DOCUMENTS
February 17, 2014

ADDENDUM NUMBER

ATTACHMENT NUMBER

RECORD OF REVISIONS

No.	DATE	DESCRIPTION

STATE OF ALASKA
DEPARTMENT OF ADMINISTRATION

Division of General Services
Facilities Section
PO Box 11210
Juneau, AK 99811-0210

DOUGLAS ISLAND BUILDING RENOVATION



NORTHWIND ARCHITECTS, LLC
126 SEWARD ST
JUNEAU, ALASKA, 99801

R&M ENGINEERING, INC.
6205 GLACIER HIGHWAY
JUNEAU, ALASKA, 99801
PHONE: 907-780-6060
www.rmjunEAU.com

IF THE ABOVE DIMENSION DOES NOT MEASURE ONE INCH (1") EXACTLY, THIS DRAWING WILL HAVE BEEN ENLARGED OR REDUCED, AFFECTING ALL LABELED SCALES.

DRAWN BY: M.L.L.

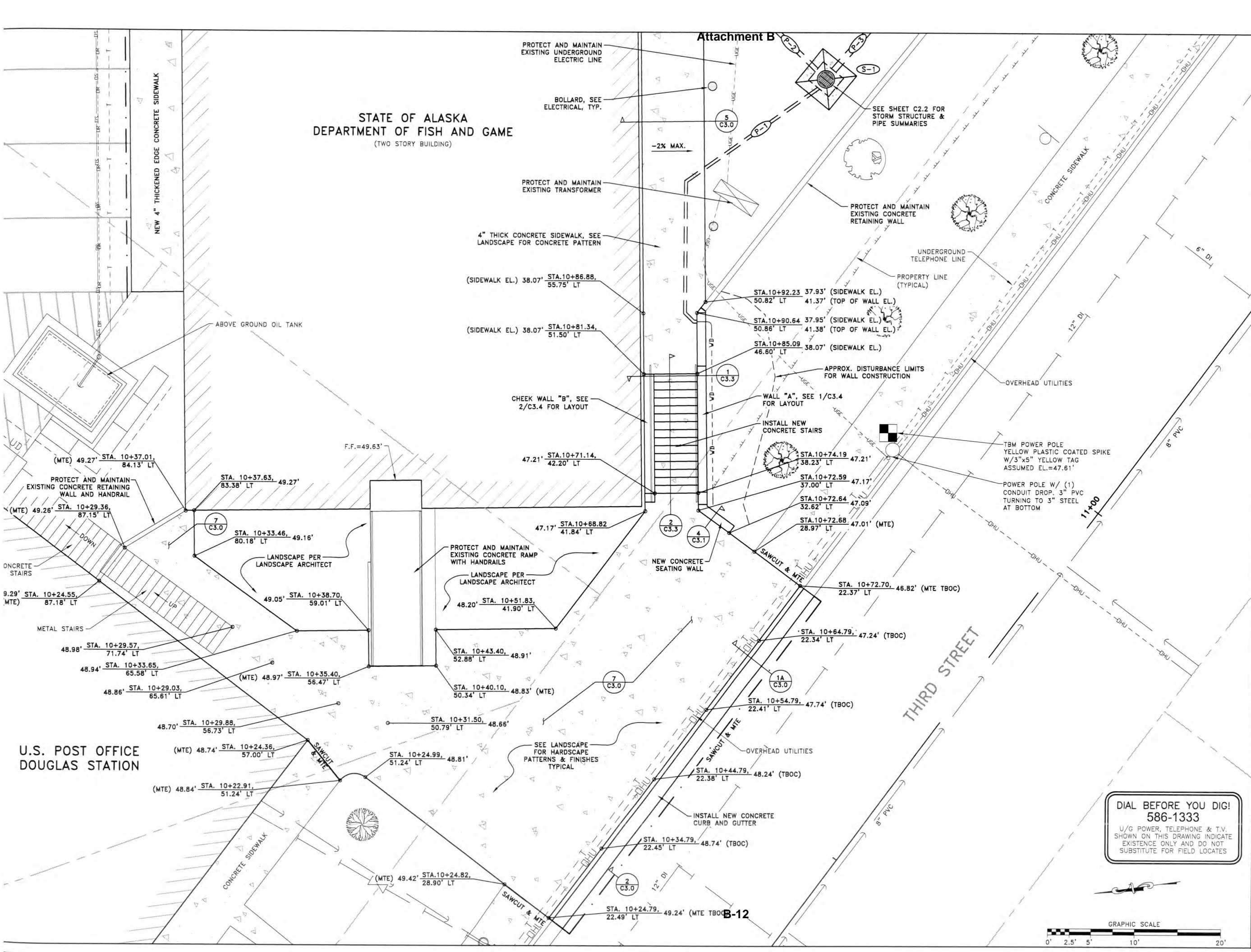
C2.0
SHEET KEY MAP

PROJECT DESIGNATION NUMBER

2014-0222-2436

STATE YEAR

ALASKA 2014



CONTRACT DOCUMENTS
February 17, 2014

ADDENDUM NUMBER

ATTACHMENT NUMBER

RECORD OF REVISIONS

No.	DATE	DESCRIPTION

STATE OF ALASKA
DEPARTMENT OF ADMINISTRATION

Division of General Services
Facilities Section
PO Box 11210
Juneau, AK 99811-0210

DOUGLAS ISLAND BUILDING RENOVATION

2-17-14

NORTHWIND ARCHITECTS, LLC
126 SEWARD ST
JUNEAU, ALASKA, 99801

R&M ENGINEERING, INC.
6205 GLACIER HIGHWAY
JUNEAU, ALASKA, 99801
PHONE: 907-780-6060
www.rmjunEAU.com

IF THE ABOVE DIMENSION DOES NOT MEASURE ONE INCH (1") EXACTLY, THIS DRAWING WILL HAVE BEEN ENLARGED OR REDUCED, AFFECTING ALL LABELED SCALES.

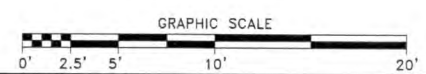
DRAWN BY: M.L.L.

C2.1
CIVIL SITE PLAN

PROJECT DESIGNATION NUMBER
2014-0222-2436

STATE	YEAR
ALASKA	2014

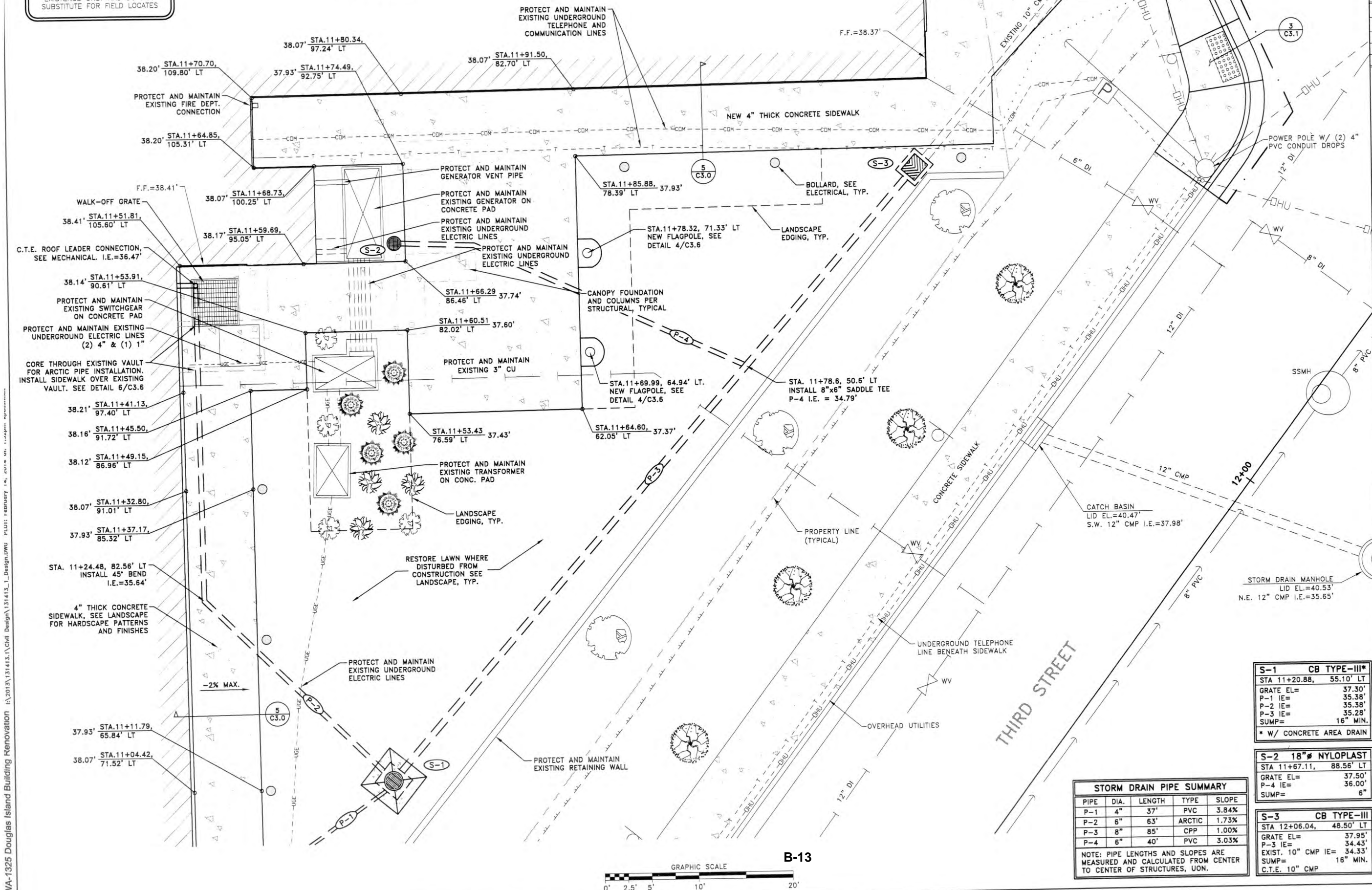
DIAL BEFORE YOU DIG!
586-1333
U/G POWER, TELEPHONE & T.V.
SHOWN ON THIS DRAWING INDICATE
EXISTENCE ONLY AND DO NOT
SUBSTITUTE FOR FIELD LOCATES



DIAL BEFORE YOU DIG!
586-1333

U/G POWER, TELEPHONE & T.V.
SHOWN ON THIS DRAWING INDICATE
EXISTENCE ONLY AND DO NOT
SUBSTITUTE FOR FIELD LOCATES

**STATE OF ALASKA
DEPARTMENT OF FISH AND GAME**
(TWO STORY BUILDING)



B-13

**CONTRACT
DOCUMENTS**
February 17, 2014

ADDENDUM NUMBER

ATTACHMENT NUMBER

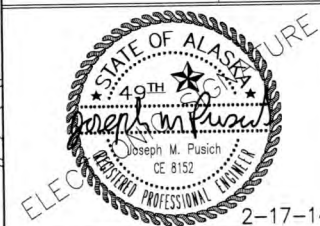
RECORD OF REVISIONS

No.	DATE	DESCRIPTION

**STATE OF ALASKA
DEPARTMENT OF ADMINISTRATION**

Division of General Services
Facilities Section
PO Box 11210
Juneau, AK 99811-0210

DOUGLAS ISLAND BUILDING RENOVATION



NORTHWIND ARCHITECTS, LLC
126 SEWARD ST
JUNEAU, ALASKA, 99801

R&M ENGINEERING, INC.
6205 GLACIER HIGHWAY
JUNEAU, ALASKA, 99801
PHONE: 907-780-6060
www.rmjunau.com

IF THE ABOVE DIMENSION DOES NOT MEASURE ONE INCH
(1") EXACTLY, THIS DRAWING WILL HAVE BEEN ENLARGED
OR REDUCED, AFFECTING ALL LABELED SCALES.

DRAWN BY: M.L.L.

C2.2
CIVIL SITE PLAN

PROJECT DESIGNATION NUMBER

2014-0222-2436

STATE	YEAR
ALASKA	2014

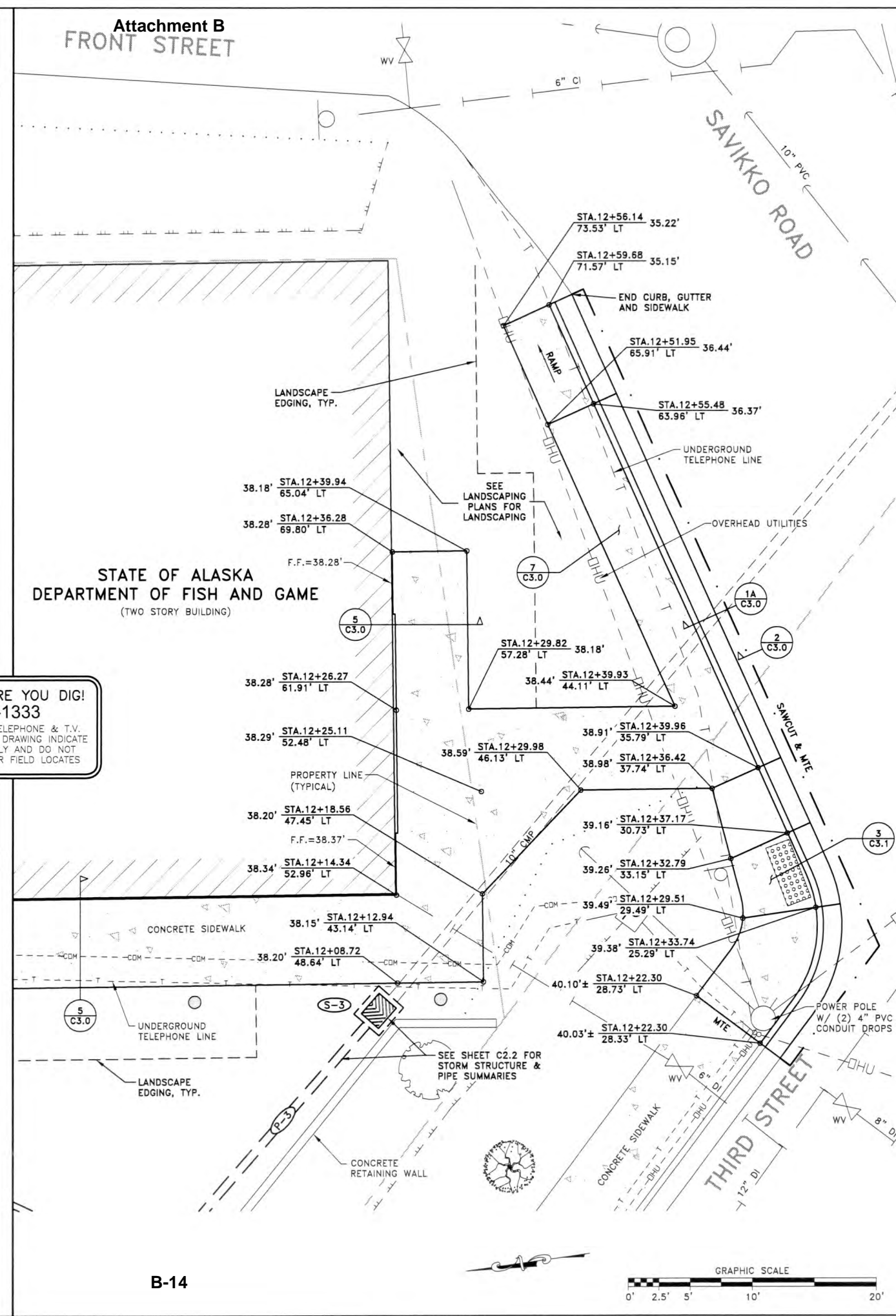
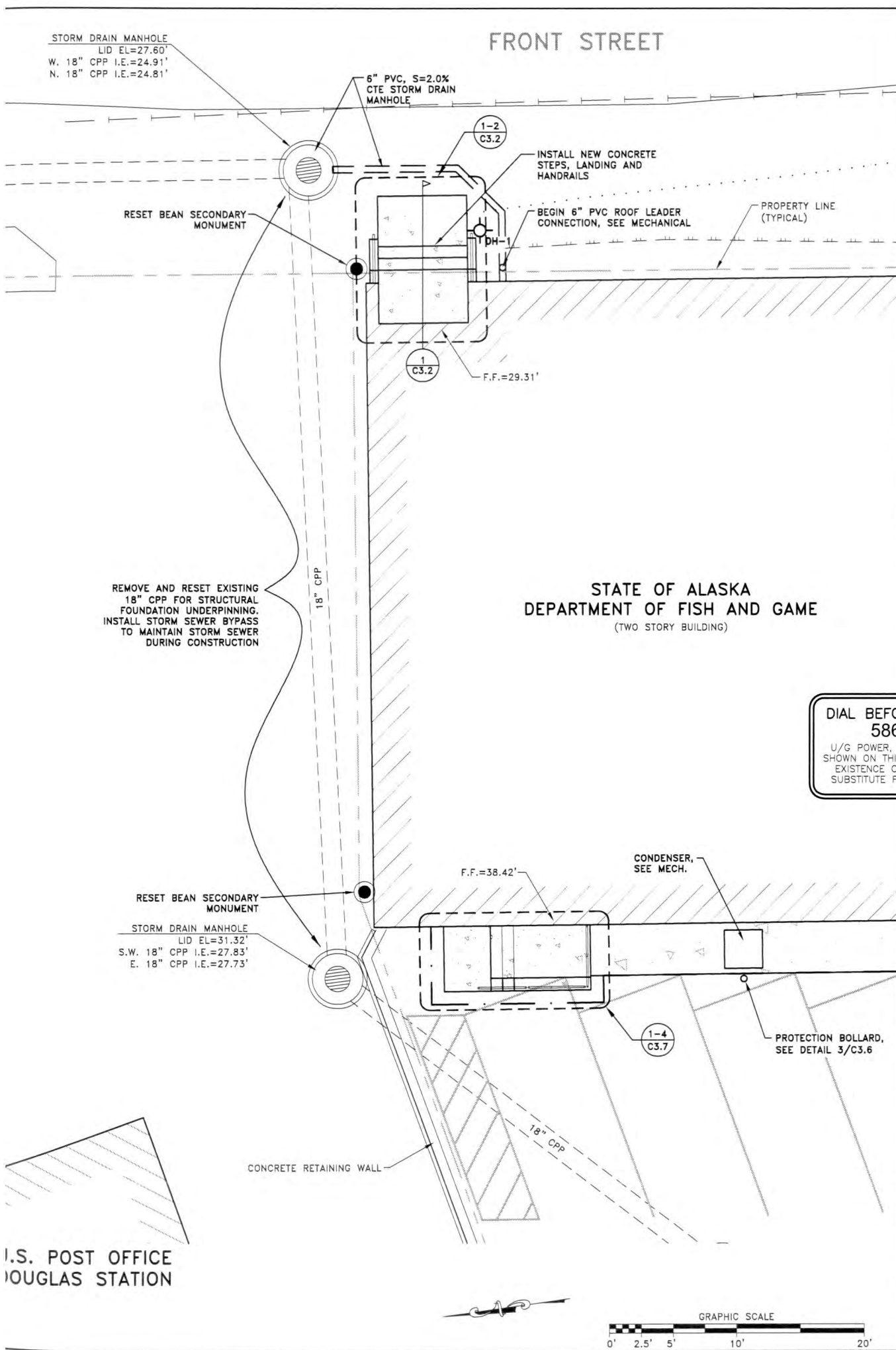
S-1 CB TYPE-III*	
STA 11+20.88,	55.10' LT
GRATE EL=	37.30'
P-1 IE=	35.38'
P-2 IE=	35.38'
P-3 IE=	35.28'
SUMP=	16" MIN.
* W/ CONCRETE AREA DRAIN	

S-2 18" NYLOPLAST	
STA 11+67.11,	88.56' LT
GRATE EL=	37.50'
P-4 IE=	36.00'
SUMP=	6"

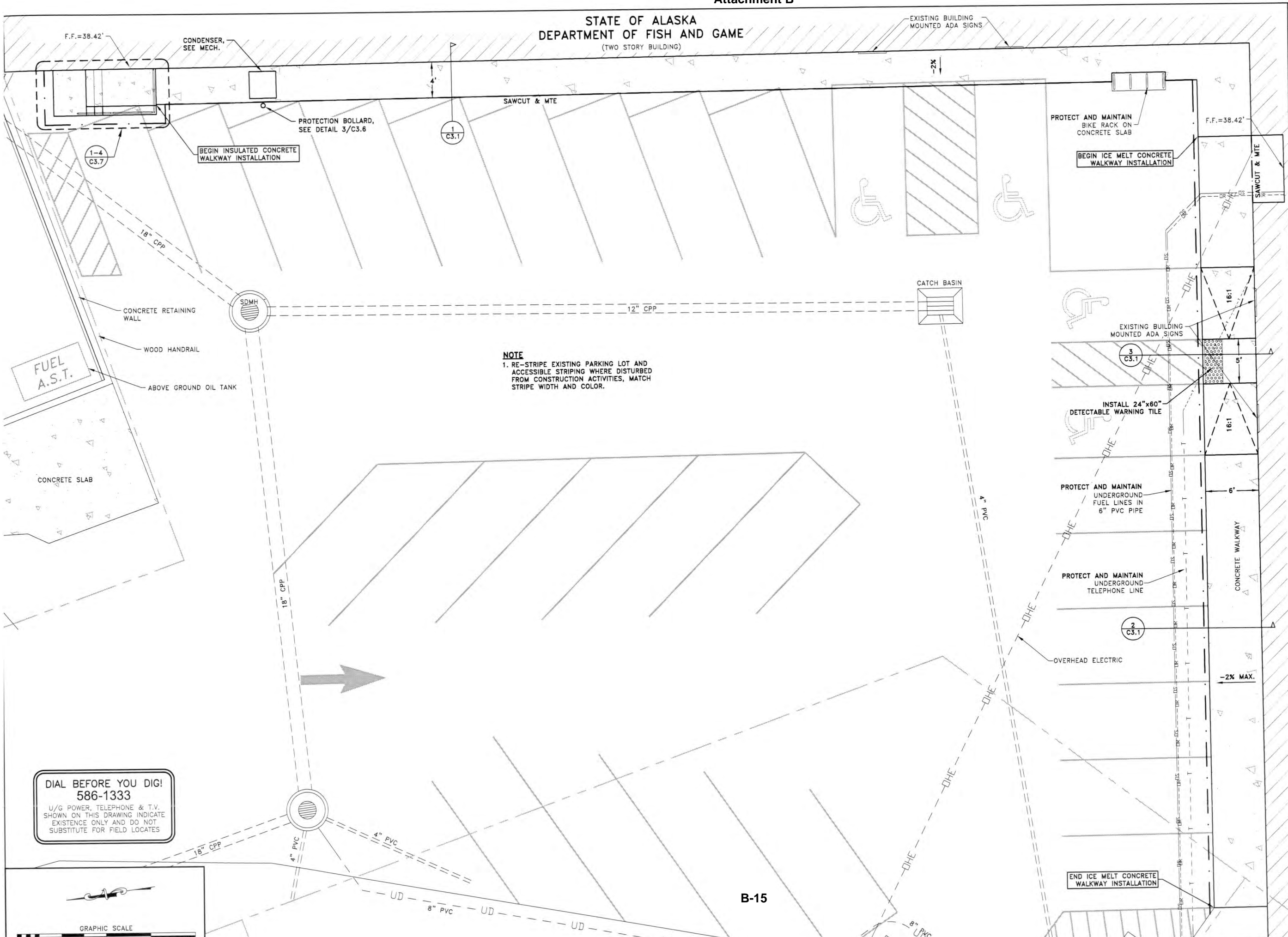
S-3 CB TYPE-III	
STA 12+06.04,	48.50' LT
GRATE EL=	37.95'
P-3 IE=	34.43'
EXIST. 10" CMP IE=	34.33'
SUMP=	16" MIN.
C.T.E. 10" CMP	

STORM DRAIN PIPE SUMMARY				
PIPE	DIA.	LENGTH	TYPE	SLOPE
P-1	4"	37'	PVC	3.84%
P-2	6"	63'	ARCTIC	1.73%
P-3	8"	85'	CPP	1.00%
P-4	6"	40'	PVC	3.03%

NOTE: PIPE LENGTHS AND SLOPES ARE MEASURED AND CALCULATED FROM CENTER TO CENTER OF STRUCTURES, UON.



CONTRACT DOCUMENTS February 17, 2014	
ADDENDUM NUMBER	
ATTACHMENT NUMBER	
RECORD OF REVISIONS	
No.	DATE DESCRIPTION
<div> <div>STATE OF ALASKA DEPARTMENT OF ADMINISTRATION</div> <div> Division of General Services Facilities Section PO Box 11210 Juneau, AK 99811-0210 </div> </div>	
DOUGLAS ISLAND BUILDING RENOVATION	
<div> <div>STATE OF ALASKA 49TH Joseph M. Pusich CE 8152 REGISTERED PROFESSIONAL ENGINEER</div> <div>2-17-14</div> </div>	
NORTHWIND ARCHITECTS, LLC 126 SEWARD ST JUNEAU, ALASKA, 99801	
R&M ENGINEERING, INC. 6205 GLACIER HIGHWAY JUNEAU, ALASKA, 99801 PHONE: 907-780-6060 www.rmjunEAU.com	
IF THE ABOVE DIMENSION DOES NOT MEASURE ONE INCH (1") EXACTLY, THIS DRAWING WILL HAVE BEEN ENLARGED OR REDUCED, AFFECTING ALL LABELED SCALES.	
DRAWN BY: M.L.L.	
C2.3 CIVIL SITE PLAN	
PROJECT DESIGNATION NUMBER	
2014-0222-2436	
STATE	YEAR
ALASKA	2014



CONTRACT DOCUMENTS
February 17, 2014

ADDENDUM NUMBER

ATTACHMENT NUMBER

RECORD OF REVISIONS

No.	DATE	DESCRIPTION

STATE OF ALASKA
DEPARTMENT OF ADMINISTRATION

Division of General Services
Facilities Section
PO Box 11210
Juneau, AK 99811-0210

DOUGLAS ISLAND BUILDING RENOVATION

2-17-14

NORTHWIND ARCHITECTS, LLC
126 SEWARD ST
JUNEAU, ALASKA, 99801

R&M ENGINEERING, INC.
6205 GLACIER HIGHWAY
JUNEAU, ALASKA, 99801
PHONE: 907-780-6060
www.rmjunEAU.com

IF THE ABOVE DIMENSION DOES NOT MEASURE ONE INCH (1") EXACTLY, THIS DRAWING WILL HAVE BEEN ENLARGED OR REDUCED, AFFECTING ALL LABELED SCALES.

DRAWN BY: M.L.L.

C2.4
CIVIL SITE PLAN

PROJECT DESIGNATION NUMBER
2014-0222-2436

STATE	YEAR
ALASKA	2014