

DO NOT SCALE FROM THESE DRAWINGS USE DIMENSIONS

CHECKED BY: C. TRAPP

STATE OF ALASKA  
DEPARTMENT OF HIGHWAYS  
& PUBLIC FACILITIES  
SOUTHEAST REGION

**VICINITY MAP**

EGAN DRIVE IMPROVEMENTS  
MAIN ST. TO 10TH ST.  
PROJECT #69393

NO.	DATE	REVISIONS DESCRIPTION	YEAR	SHEET NO.	TOTAL SHEETS
1	2013	PROJECT DESIGNATION	2013	1	5

DESIGNED BY: L. CHAMBERS  
DRAWN BY: L. CHAMBERS

PATH: Q:\JUNU\69393\PLANS\SET\XREF\69393\_MASTER.DWG  
TAB: 1 Tuesday, October 15, 2013 12:38:45 PM

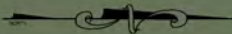
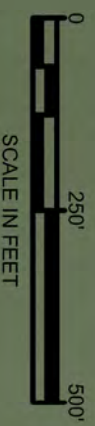
CHAMBERS, LUCAS M. (DOT)  
PROJECT DESIGNATION: NH-0932(047)



**BOP**

**EOP**

GASTINEAU CHANNEL



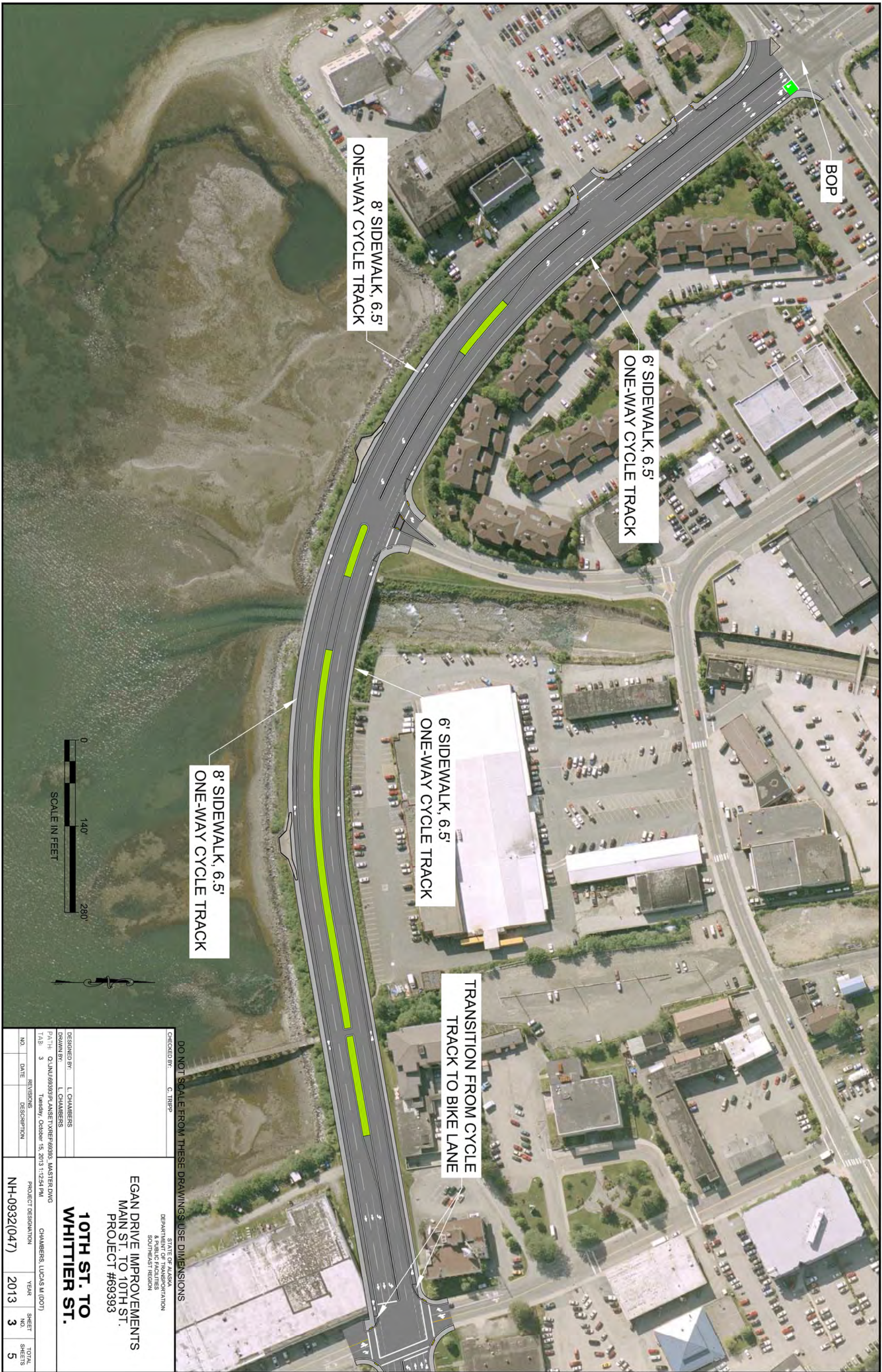
DO NOT SCALE FROM THESE DRAWINGS. USE DIMENSIONS

STATE OF ALASKA  
 DEPARTMENT OF TRANSPORTATION  
 & PUBLIC FACILITIES  
 SOUTHEAST REGION

**EGAN DRIVE IMPROVEMENTS  
 MAIN ST. TO 107TH ST.  
 PROJECT #69393**

**PROJECT OVERVIEW**

CHECKED BY: C. TRAPP		DESIGNED BY: L. CHAMBERS	
DRAWN BY: L. CHAMBERS		DATE: 2013 12 29 14 PM	
PATH: Q:\JUN169393\PLANS\SET\XREF\69393_MASTER.DWG		REVISIONS:	
TAB: 2		DESCRIPTION:	
NO. DATE		YEAR	
NO. SHEETS		SHEET NO.	
PROJECT DESIGNATION: NH-0932(047)		TOTAL SHEETS: 5	



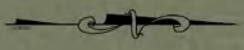
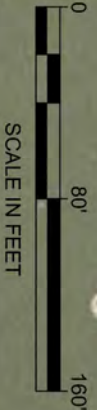
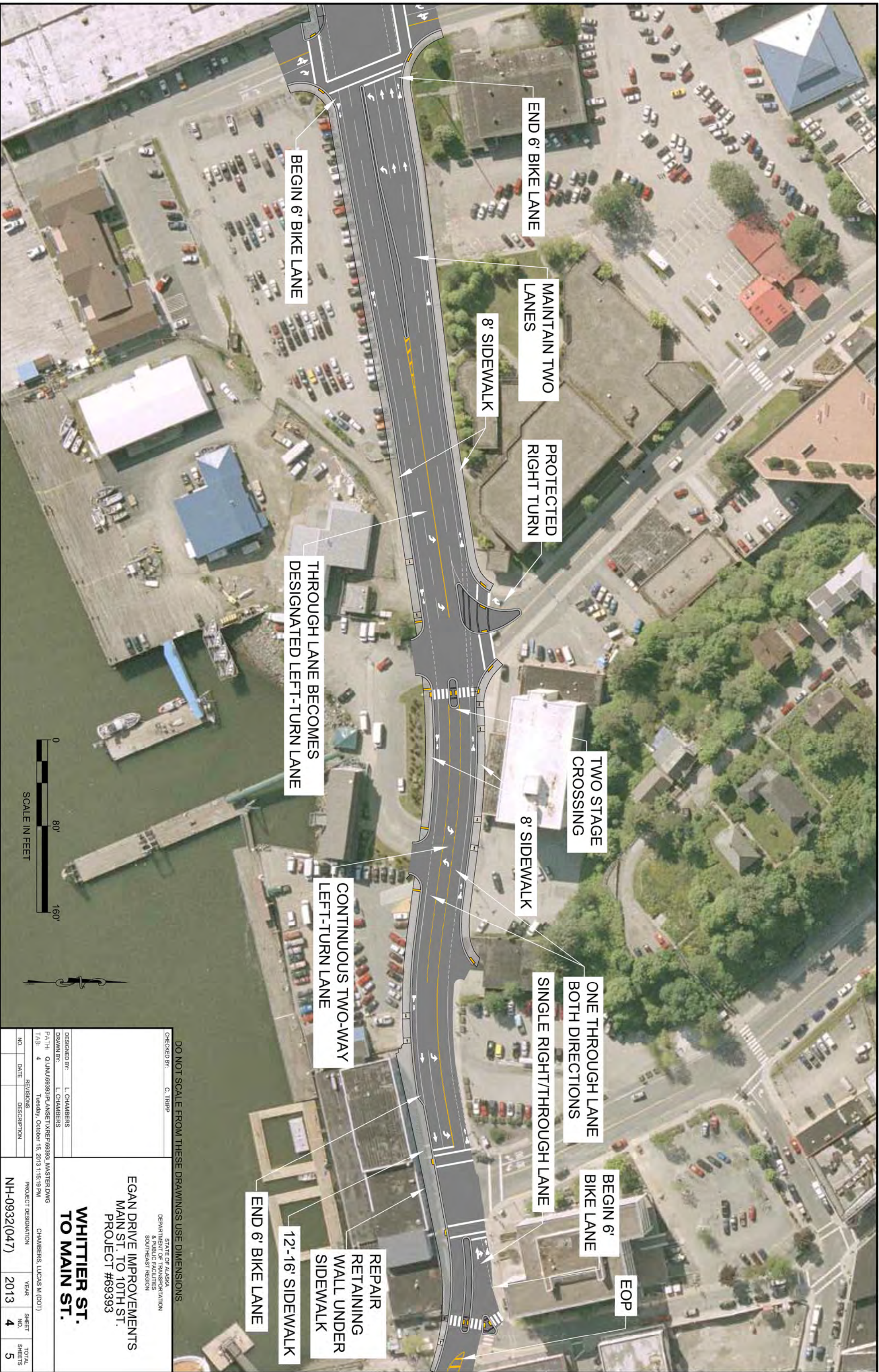
DO NOT SCALE FROM THESE DRAWINGS. USE DIMENSIONS

STATE OF ALASKA  
 DEPARTMENT OF TRANSPORTATION  
 & PUBLIC FACILITIES  
 SOUTHEAST REGION

**10TH ST. TO  
 WHITTIER ST.**

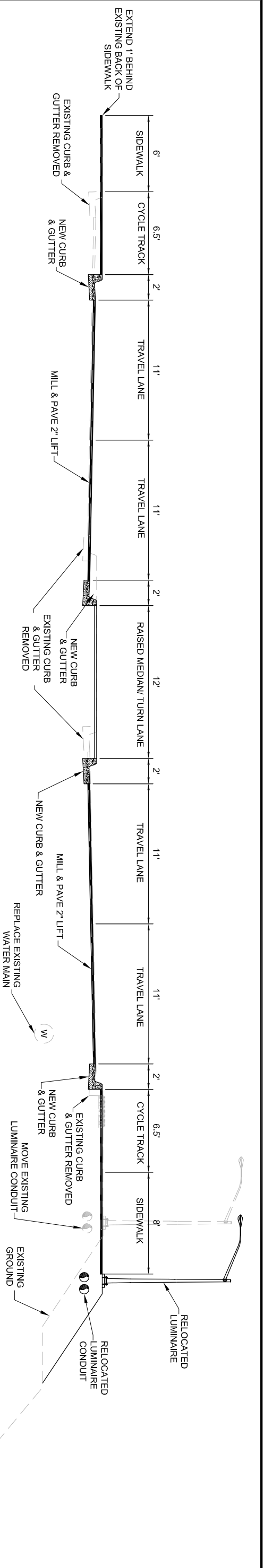
**EGAN DRIVE IMPROVEMENTS  
 MAIN ST. TO 10TH ST.  
 PROJECT #69393**

DESIGNED BY: L. CHAMBERS		CHAMBERS, LUCAS M (001)	
DRAWN BY: L. CHAMBERS		YEAR: 2013	
PATH: Q:\JUN16\9393\PLANS\SET\XREF\69393_MASTER.DWG		SHEET NO.: 3	
TAB: 3		TOTAL SHEETS: 5	
DATE: Tuesday, October 15, 2013 1:12:54 PM		PROJECT DESIGNATION: NH-0932(047)	
REVISIONS:		YEAR: 2013	
NO. DATE DESCRIPTION		SHEET NO.: 3	
		TOTAL SHEETS: 5	

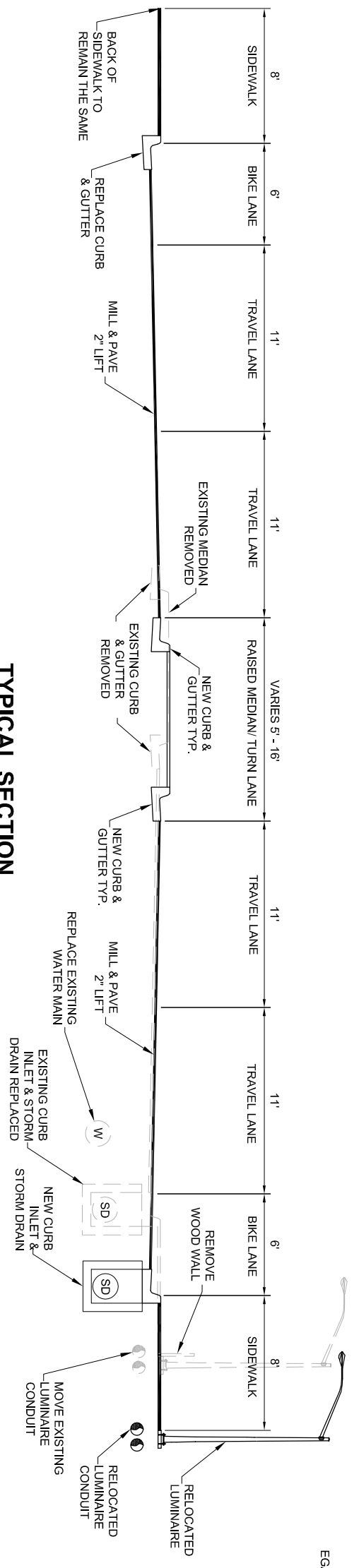


DO NOT SCALE FROM THESE DRAWINGS. USE DIMENSIONS

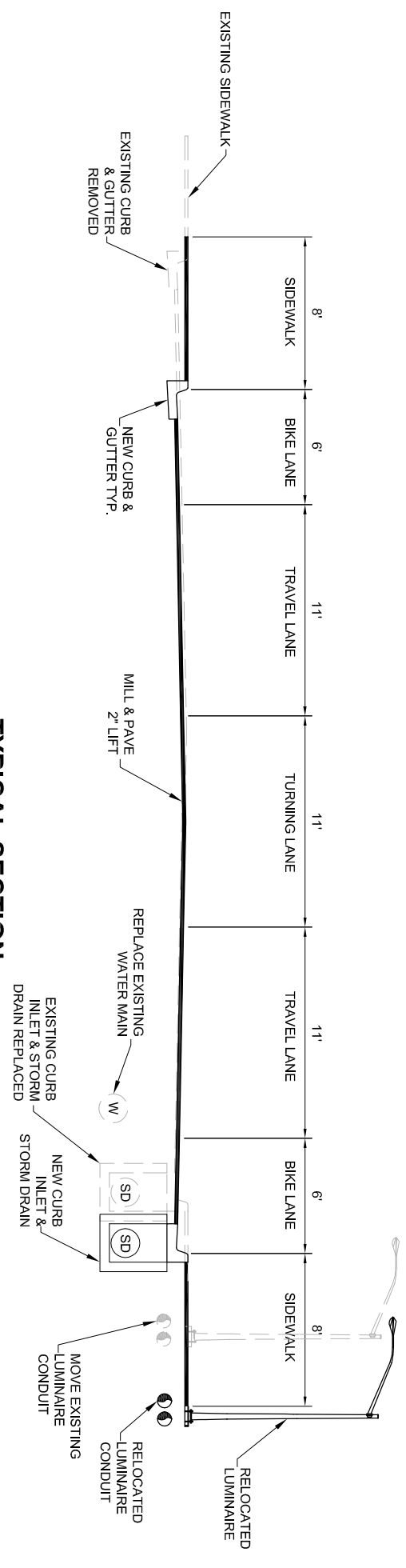
CHECKED BY: C. TRAPP		STATE OF ALASKA DEPARTMENT OF TRANSPORTATION & PUBLIC FACILITIES SOUTHEAST REGION	
DESIGNED BY: L. CHAMBERS		<b>EGAN DRIVE IMPROVEMENTS MAIN ST. TO 10TH ST. PROJECT #69393</b>  <b>WHITTIER ST. TO MAIN ST.</b>	
DRAWN BY: L. CHAMBERS			
PATH: Q:\JUN169393\PLANS\SET\XPER\69393_MASTER.DWG TAB: 4 Tuesday, October 15, 2013 1:16:19 PM			
NO.	DATE	REVISIONS DESCRIPTION	CHAMBERS, LUCAS M (DOT)
			PROJECT DESIGNATION
			NH-0932(047)
	YEAR	SHEET NO.	TOTAL SHEETS
	2013	4	5



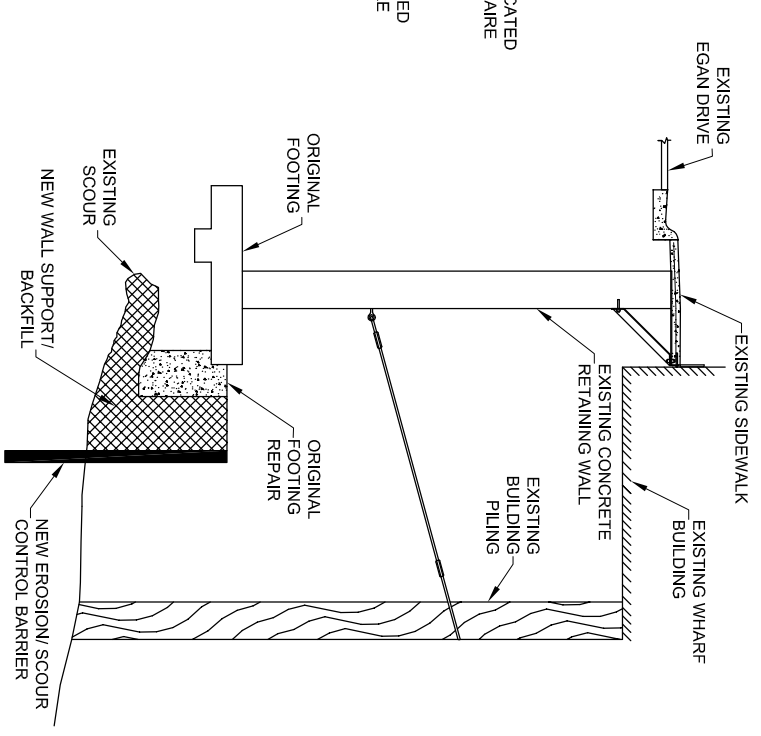
**TYPICAL SECTION**  
10TH ST. TO WHITTIER ST.



**TYPICAL SECTION**  
WHITTIER ST. TO WILLOUGHBY ST.



**TYPICAL SECTION**  
WILLOUGHBY ST. TO MAIN ST.



**TYPICAL SECTION**  
MERCHANT'S WHARF RETAINING WALL REPAIRS

DO NOT SCALE FROM THESE DRAWINGS USE DIMENSIONS

STATE OF ALASKA  
DEPARTMENT OF  
& PUBLIC FACILITIES  
SOUTHEAST REGION

**EGAN DRIVE IMPROVEMENTS**  
MAIN ST. TO 10TH ST.  
PROJECT #69393

**TYPICAL SECTIONS**

DESIGNED BY:	L. CHAMBERS	
DRAWN BY:	L. CHAMBERS	
PATH:	Q:\JUN069393\PLANS\SET\XREF\69393_MASTER.DWG	
TAB:	5 Tuesday, October 15, 2013 1:18:40 PM	
NO.	DATE	DESCRIPTION
REVISIONS		
PROJECT DESIGNATION		YEAR
NH-0932(047)		2013
SHEET NO.		5
TOTAL SHEETS		5