

MEMORANDUM

CITY/BOROUGH OF JUNEAU
155 South Seward Street, Juneau, Alaska 99801

DATE: February 20, 2013

TO: CBJ Planning Commission

FROM: Ben Lyman, Senior Planner
Community Development Department



FILE No.: INQ2013 0004

SUBJECT: Presentations on downtown Juneau transportation improvement projects by DOTPF and CBJ staff.

The State of Alaska Department of Transportation and Public Facilities (DOTPF) and the City and Borough of Juneau Engineering Department (CBJ Engineering) are both in the process of developing designs for transportation infrastructure improvements along the Gastineau Channel shoreline between Main Street and the Juneau-Douglas Bridge (Tenth Street).

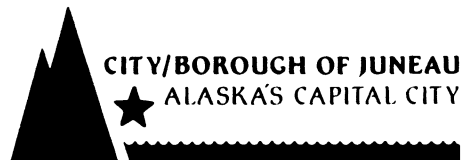
DOTPF's project is a bicycle and pedestrian safety improvement and repaving project for Egan Drive between Main Street and Tenth Street, as well as reconstruction of the seawall at the Main Street and Egan Drive intersection.

CBJ Engineering's project is to construct the Seawalk between Marine Park and the future park at the former downtown Street Department site, located adjacent to the Juneau-Douglas Bridge.

These two projects constitute a major change in the non-motorized transportation network in the Egan Drive corridor through downtown Juneau, and staff at both DOTPF and CBJ Engineering extend the opportunity for the Planning Commission to become more familiar with and provide comments on these projects.

Attachments:

DOTPF Project #69393 Overview Drawings (3 pgs.)





DO NOT SCALE FROM THESE DRAWINGS USE DIMENSIONS

STATE OF ALASKA
 DEPARTMENT OF TRANSPORTATION
 & PUBLIC FACILITIES
 SOUTHEAST REGION

**EGAN DRIVE IMPROVEMENTS
 MAIN ST. TO 10TH ST.
 PROJECT #69393**

PROJECT OVERVIEW

CHECKED BY: C. TRIPP		DESIGNED BY: L. CHAMBERS		
DRAWN BY: L. CHAMBERS		DATE: 2/19/2013		
PATH: Q:\JUN169393\ENDOC\MEETINGS\69393_CO\NGERT_PRESENTATION\DRAWING		REVISIONS		
TAB: 1 Tuesday, February 19, 2013 2:25:48 PM		DESCRIPTION		
NO.	DATE	YEAR	SHEET NO.	TOTAL SHEETS
		2013	1	3
PROJECT DESIGNATION		NH-0932(047)		



BOP

EXISTING 8' SIDEWALK
WIDENED TO AN 11'
SHARED USE PATH

EXISTING LOOKOUTS
TO REMAIN

EXISTING VEGETATIVE
BUFFER TO REMAIN

EXISTING 8' SIDEWALK
WIDENED TO AN 11'
SHARED USE PATH

DO NOT SCALE FROM THESE DRAWINGS USE DIMENSIONS

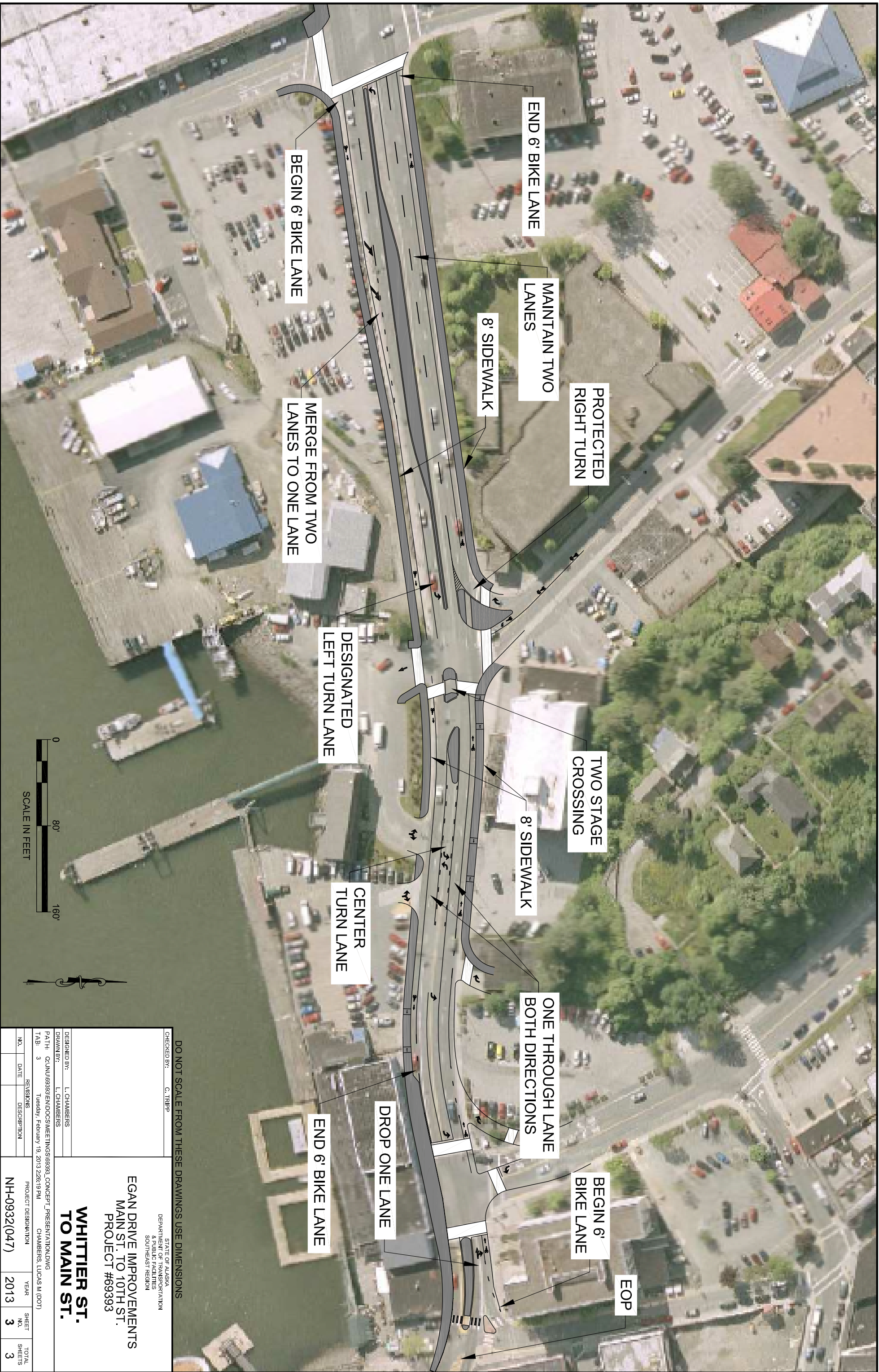
CHECKED BY: C. TRIPP

STATE OF ALASKA
DEPARTMENT OF TRANSPORTATION
& PUBLIC FACILITIES
SOUTHEAST REGION

**EGAN DRIVE IMPROVEMENTS
MAIN ST. TO 10TH ST.
PROJECT #69393**

**10TH ST. TO
WHITTIER ST.**

DESIGNED BY:	L. CHAMBERS			
DRAWN BY:	L. CHAMBERS			
PATH:	Q:\JUN169393\END\DOCS\METINGS\69393_CONCEPT_PRESENTATION\DRAWING			
TAB:	2 Tuesday, February 19, 2013 2:28:06 PM CHAMBERS, LUCAS M. (001)			
NO.	DATE	REVISIONS	DESCRIPTION	
PROJECT DESIGNATION		YEAR	SHEET NO.	TOTAL SHEETS
NH-0932(047)		2013	2	3



DO NOT SCALE FROM THESE DRAWINGS USE DIMENSIONS

CHECKED BY: C. TRIPP
 STATE OF ALASKA
 DEPARTMENT OF TRANSPORTATION
 & PUBLIC FACILITIES
 SOUTHEAST REGION

**EGAN DRIVE IMPROVEMENTS
 MAIN ST. TO 10TH ST.
 PROJECT #69393**

**WHITTIER ST.
 TO MAIN ST.**

DESIGNED BY:	L. CHAMBERS		
DRAWN BY:	L. CHAMBERS		
PATH:	Q:\JUN16\9393\END\DOCS\MEETINGS\69393_CONCEPT_PRESENTATION.DWG		
TAB:	3 Tuesday, February 19, 2013 2:26:19 PM		
NO.	DATE	REVISIONS	DESCRIPTION
PROJECT DESIGNATION			
NH-0932(047)		YEAR	2013
		SHEET NO.	3
		TOTAL SHEETS	3