

**Jensen  
Yorba  
Lott**  
Inc.

522 West 10th Street  
Juneau, Alaska 99801  
phone 907-586-1070  
fax 907-586-3959  
jensenyorbaltott.com



**R & M ENGINEERING, INC.**  
6205 GLACIER HIGHWAY  
JUNEAU, AK. 99801  
Phone 907-780-6060  
Fax 907-780-4611  
rmengineering@rmjuneau.com



**DEMOLITION NOTE**  
ALL ITEMS DESIGNATED TO BE REMOVED SHALL BE DISPOSED OF AT AN APPROVED DISPOSAL SITE.

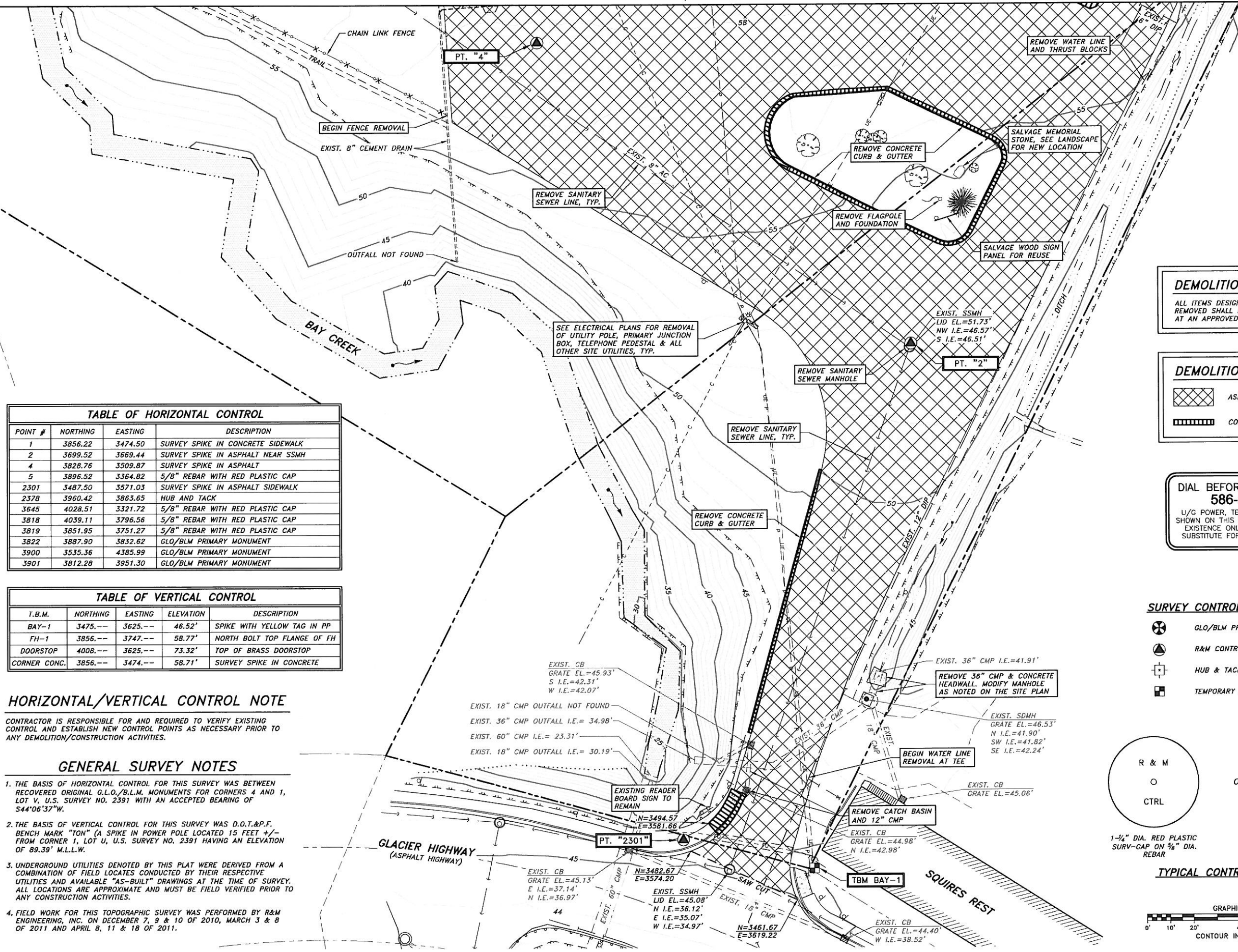
**DEMOLITION LEGEND**  
 ASPHALT REMOVAL  
 CONCRETE REMOVAL

**DIAL BEFORE YOU DIG!**  
**586-1333**  
U/G POWER, TELEPHONE & T.V. SHOWN ON THIS DRAWING INDICATE EXISTENCE ONLY AND DO NOT SUBSTITUTE FOR FIELD LOCATES

**SURVEY CONTROL SYMBOLS**  
 GLO/BLM PRIMARY MONUMENT (RECOVERED)  
 R&M CONTROL POINT  
 HUB & TACK  
 TEMPORARY BENCH MARK (T.B.M.)

**TYPICAL CONTROL MONUMENTS**  
 R & M  
 SURVEY MARK  
 1-3/4" DIA. RED PLASTIC SURV-CAP ON 3/8" DIA. REBAR  
 1" X 3" SURV-SPIKE WITH WASHER

**GRAPHIC SCALE**  
0' 10' 20' 40' 80'  
CONTOUR INTERVAL = 1'



**TABLE OF HORIZONTAL CONTROL**

POINT #	NORTHING	EASTING	DESCRIPTION
1	3856.22	3474.50	SURVEY SPIKE IN CONCRETE SIDEWALK
2	3699.52	3669.44	SURVEY SPIKE IN ASPHALT NEAR SSMH
4	3826.76	3509.87	SURVEY SPIKE IN ASPHALT
5	3896.52	3364.82	5/8" REBAR WITH RED PLASTIC CAP
2301	3487.50	3571.03	SURVEY SPIKE IN ASPHALT SIDEWALK
2378	3960.42	3863.65	HUB AND TACK
3645	4028.51	3321.72	5/8" REBAR WITH RED PLASTIC CAP
3818	4039.11	3796.56	5/8" REBAR WITH RED PLASTIC CAP
3819	3851.95	3751.27	5/8" REBAR WITH RED PLASTIC CAP
3822	3887.90	3832.62	GLO/BLM PRIMARY MONUMENT
3900	3535.36	4385.99	GLO/BLM PRIMARY MONUMENT
3901	3812.28	3951.30	GLO/BLM PRIMARY MONUMENT

**TABLE OF VERTICAL CONTROL**

T.B.M.	NORTHING	EASTING	ELEVATION	DESCRIPTION
BAY-1	3475.--	3625.--	46.52'	SPIKE WITH YELLOW TAG IN PP
FH-1	3856.--	3747.--	58.77'	NORTH BOLT TOP FLANGE OF FH
DOORSTOP	4008.--	3625.--	73.32'	TOP OF BRASS DOORSTOP
CORNER CONC.	3856.--	3474.--	58.71'	SURVEY SPIKE IN CONCRETE

**HORIZONTAL/VERTICAL CONTROL NOTE**

CONTRACTOR IS RESPONSIBLE FOR AND REQUIRED TO VERIFY EXISTING CONTROL AND ESTABLISH NEW CONTROL POINTS AS NECESSARY PRIOR TO ANY DEMOLITION/CONSTRUCTION ACTIVITIES.

**GENERAL SURVEY NOTES**

- THE BASIS OF HORIZONTAL CONTROL FOR THIS SURVEY WAS BETWEEN RECOVERED ORIGINAL G.L.O./B.L.M. MONUMENTS FOR CORNERS 4 AND 1, LOT V, U.S. SURVEY NO. 2391 WITH AN ACCEPTED BEARING OF S44°06'37"W.
- THE BASIS OF VERTICAL CONTROL FOR THIS SURVEY WAS D.O.T.&P.F. BENCH MARK "TON" (A SPIKE IN POWER POLE LOCATED 15 FEET +/- FROM CORNER 1, LOT U, U.S. SURVEY NO. 2391 HAVING AN ELEVATION OF 89.39' M.L.L.W.
- UNDERGROUND UTILITIES DENOTED BY THIS PLAN WERE DERIVED FROM A COMBINATION OF FIELD LOCATES CONDUCTED BY THEIR RESPECTIVE UTILITIES AND AVAILABLE "AS-BUILT" DRAWINGS AT THE TIME OF SURVEY. ALL LOCATIONS ARE APPROXIMATE AND MUST BE FIELD VERIFIED PRIOR TO ANY CONSTRUCTION ACTIVITIES.
- FIELD WORK FOR THIS TOPOGRAPHIC SURVEY WAS PERFORMED BY R&M ENGINEERING, INC. ON DECEMBER 7, 9 & 10 OF 2010, MARCH 3 & 8 OF 2011 AND APRIL 8, 11 & 18 OF 2011.

City and Borough of Juneau - Juneau School District  
**Auke Bay Elementary  
 School Renovation**  
 CBJ Project No. E12-042  
 Juneau, Alaska



REVISIONS


SHEET TITLE  
 EXISTING SITE  
 CONDITIONS &  
 DEMOLITION  
 PLAN  
 DATE: December 21, 2011  
 FILE: 10036

**C100**

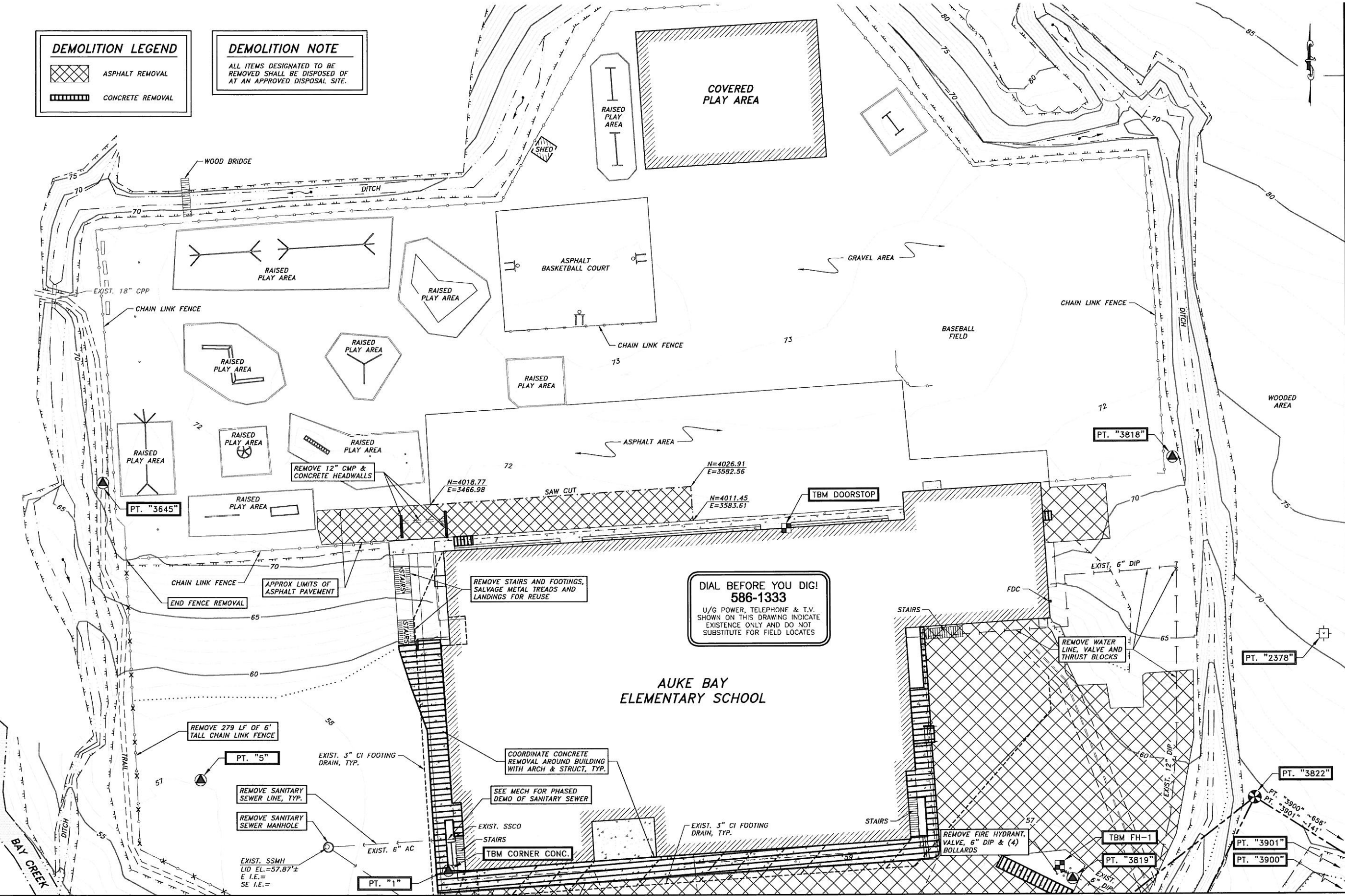
12/20/11 10:41:13 Overlap\BAA\Working Conditions.DWG PLOT: December 18, 2011 at 1:23:39pm

**DEMOLITION LEGEND**

 ASPHALT REMOVAL  
 CONCRETE REMOVAL

**DEMOLITION NOTE**

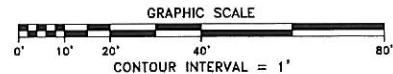
ALL ITEMS DESIGNATED TO BE REMOVED SHALL BE DISPOSED OF AT AN APPROVED DISPOSAL SITE.



**DIAL BEFORE YOU DIG!**  
**586-1333**  
 U/G POWER, TELEPHONE & T.V. SHOWN ON THIS DRAWING INDICATE EXISTENCE ONLY AND DO NOT SUBSTITUTE FOR FIELD LOCATES

**AUKE BAY ELEMENTARY SCHOOL**

MATCH LINE, SHEET C100



**Jensen Yorba Lott Inc.**

522 West 10th Street  
 Juneau, Alaska 99801  
 phone 907-586-1070  
 fax 907-586-3959  
 jensenyorbaltott.com

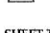
**R&M ENGINEERING, INC.**

6205 GLACIER HIGHWAY  
 JUNEAU, AK. 99801  
 Phone 907-780-6060  
 Fax 907-780-4611  
 rmengineering@rjmjuneau.com



City and Borough of Juneau - Juneau School District  
**Auke Bay Elementary School Renovation**  
 CBJ Project No. E12-042  
 Juneau, Alaska

REVISIONS

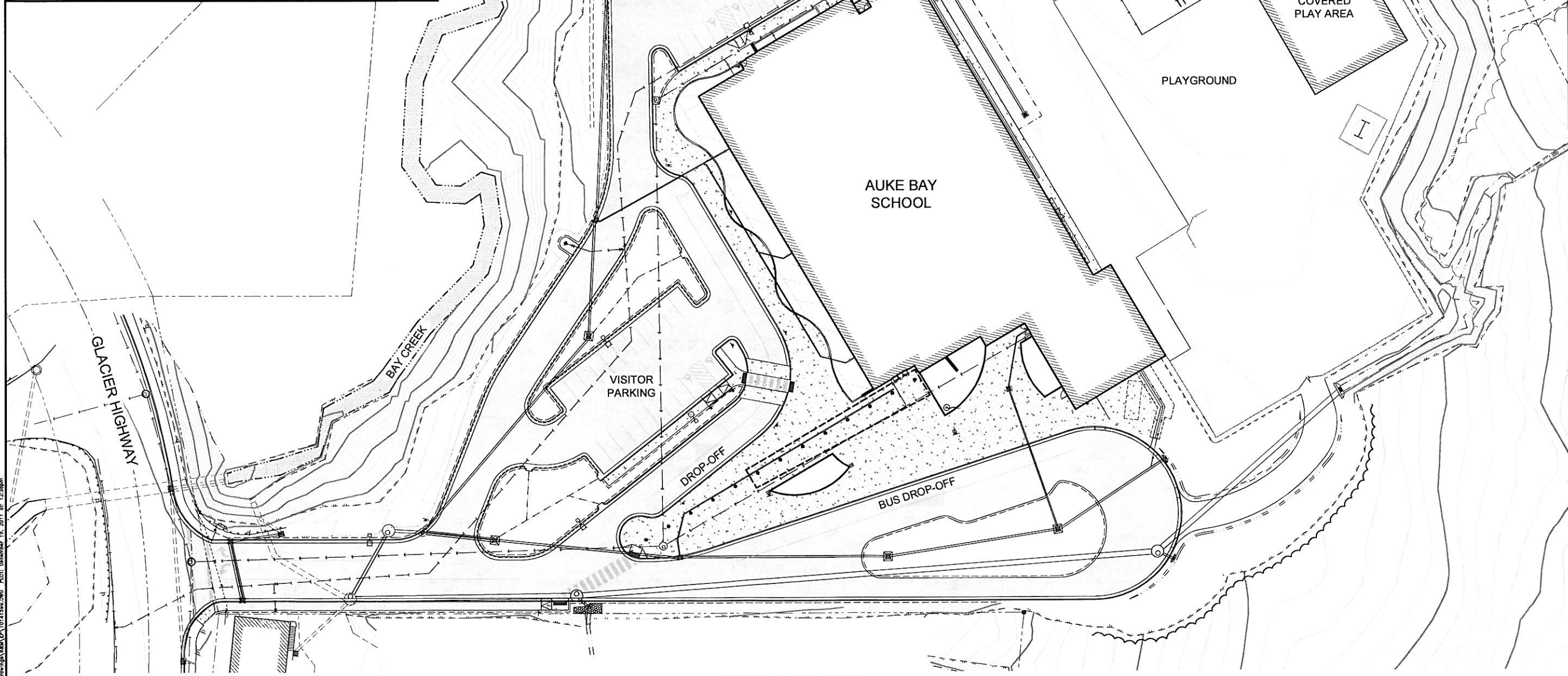
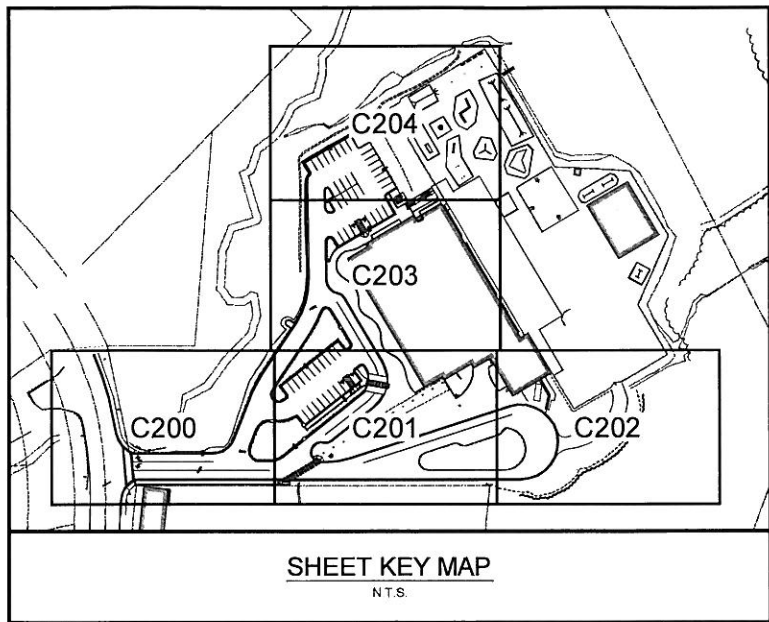
  
  


SHEET TITLE  
**EXISTING SITE CONDITIONS & DEMOLITION PLAN**  
 DATE: December 21, 2011  
 FILE: 10036

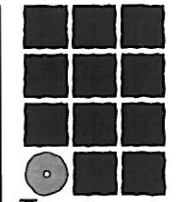
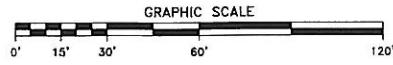
**C101**

1/20/10, 10:45:00am, R&M/Engineering, R&M/Engineering, Conditions.DWG, PLOT: December 18, 2011 at 12:39pm





**OVERALL SITE PLAN**



**Jensen  
Yorba  
Lott  
Inc.**

522 West 10th Street  
Juneau, Alaska 99801  
phone 907-586-1070  
fax 907-586-3959  
jensenyorbaltott.com



**R & M ENGINEERING, INC.**  
6205 GLACIER HIGHWAY  
JUNEAU, AK. 99801  
Phone 907-780-6060  
Fax 907-780-4611  
rmengineering@rmjuneau.com



City and Borough of Juneau - Juneau School District  
**Auke Bay Elementary  
School Renovation**  
CBJ Project No. E12-042  
Juneau, Alaska

REVISIONS
△
△
△

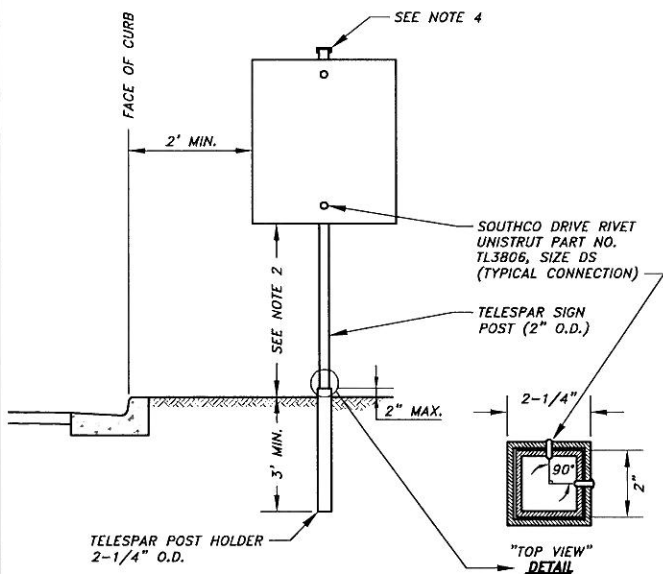
SHEET TITLE  
**OVERALL SITE  
PLAN & SHEET  
KEY MAP**

DATE: December 21, 2011  
FILE: 10036

**C102**

I:\2010\101415\Juneau\Auke\Auke\101415.dwg PLOT: December 19, 2011 09:12:38am

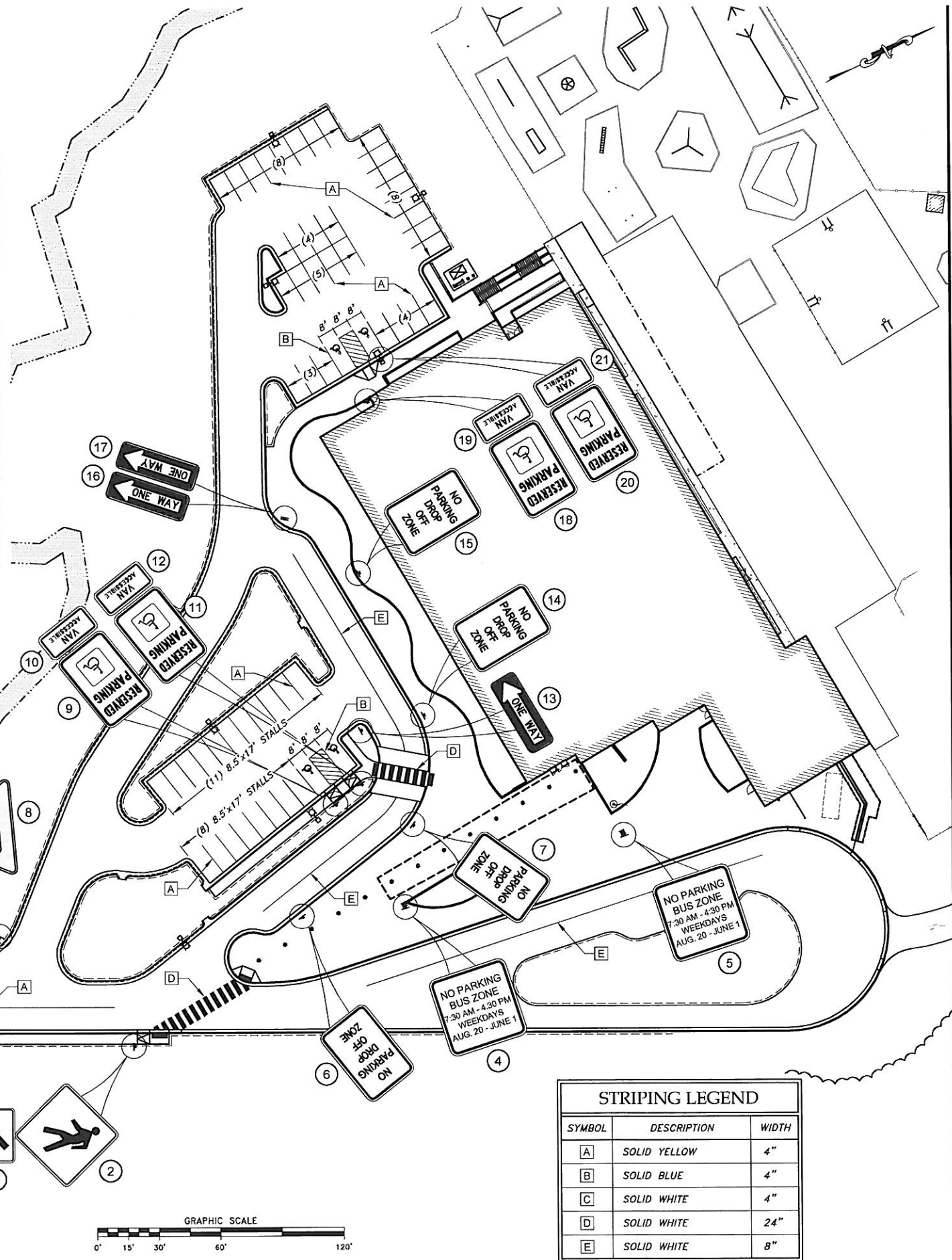
SIGN	NORTHING	EASTING	CODE	LEGEND	SIZE		# OF POSTS	REMARKS
					WD.	HT.		
1	3495.6	3580.5	R1-1	STOP	24"	24"	1	
2	3639.8	3706.7	W11-2	PEDESTRIAN CROSSING SYMBOL	36"	36"	1	FLORESCENT YELLOW-GREEN PANEL W/ BLACK BORDER & LEGEND
3			W16-7PL	DIAGONAL PLATE SYMBOL	24"	12"	0	FLORESCENT YELLOW-GREEN PANEL W/ BLACK BORDER & LEGEND
4	3788.6	3706.1	N/A	NO PARKING BUS ZONE 7:30 AM - 4:30 PM WEEKDAYS AUG. 20 - JUNE 1	12"	18"	0	WHITE PANEL W/ BLACK BORDER & LEGEND, MOUNT TO LIGHT POLE
5	3899.7	3723.1	N/A	NO PARKING BUS ZONE 7:30 AM - 4:30 PM WEEKDAYS AUG. 20 - JUNE 1	12"	18"	0	WHITE PANEL W/ BLACK BORDER & LEGEND, MOUNT TO LIGHT POLE
6	3742.0	3687.5	N/A	NO PARKING DROP OFF ZONE	12"	18"	1	WHITE PANEL W/ BLACK BORDER & LEGEND
7	3810.2	3671.9	N/A	NO PARKING DROP OFF ZONE	12"	18"	1	WHITE PANEL W/ BLACK BORDER & LEGEND
8	3606.1	3629.5	R1-2	YIELD	30"	30"	1	
9	3781.3	3646.0	R7-8	RESERVED PARKING	12"	18"	1	
10			R7-8A	VAN ACCESSIBLE	12"	6"	0	MOUNT BELOW SIGN 9
11	3796.9	3642.8	R7-8	RESERVED PARKING	12"	18"	1	
12			R7-8A	VAN ACCESSIBLE	12"	6"	0	MOUNT BELOW SIGN 11
13	3808.3	3619.6	R6-1L	ONE WAY	36"	12"	1	
14	3838.8	3626.8	N/A	NO PARKING DROP OFF ZONE	12"	18"	1	WHITE PANEL W/ BLACK BORDER & LEGEND
15	3842.3	3550.8	N/A	NO PARKING DROP OFF ZONE	12"	18"	1	WHITE PANEL W/ BLACK BORDER & LEGEND
16	3822.7	3510.7	R6-1L	ONE WAY	36"	12"	1	MOUNT ABOVE SIGN 22
17			R6-1R	ONE WAY	36"	12"	0	MOUNT ABOVE SIGN 22
18	3884.4	3477.9	R7-8	RESERVED PARKING	12"	18"	1	
19			R7-8A	VAN ACCESSIBLE	12"	6"	0	MOUNT BELOW SIGN 18
20	3899.6	3462.9	R7-8	RESERVED PARKING	12"	18"	0	MOUNT TO LIGHT POLE
21			R7-8A	VAN ACCESSIBLE	12"	6"	0	MOUNT BELOW SIGN 20



- SIGN NOTES:**
- SIGN PANEL MATERIAL AND THICKNESS SHALL CONFORM TO ALASKA DOT&PF STANDARD DRAWINGS MANUAL.
  - SIGN SIZE AND PLACEMENT SHALL CONFORM TO THE MANUAL ON UNIFORM TRAFFIC CONTROL DEVICES AND THE ALASKA SUPPLEMENT (SEE LATEST EDITIONS). MOUNTING HEIGHT FOR RESERVED PARKING SIGNS SHALL BE 60 INCHES ABOVE FINISH GRADE MEASURED TO BOTTOM OF THE SIGN.
  - SIGN POST SHALL BE INSERTED INTO HOLDER A MINIMUM OF 0'-6" AND A MAXIMUM OF 1'-0".
  - SNUGLY COVER TOP OF POST WITH EXTRUDED TELES PAR POST CAP.

1 SIGN ASSEMBLY DETAIL  
N.T.S.

- STRIPING NOTES**
- CURB FACES AT RESERVED PARKING SPACES AND ACCESSIBLE AISLES SHALL BE PAINTED BLUE.
  - YELLOW PAINT FOR PARKING STALLS SHALL BE SHERWIN S-W TRAFFIC MARKINGS SERIES B-29Y2 OR APPROVED EQUAL.



SYMBOL	DESCRIPTION	WIDTH
A	SOLID YELLOW	4"
B	SOLID BLUE	4"
C	SOLID WHITE	4"
D	SOLID WHITE	24"
E	SOLID WHITE	8"

**Jensen Yorba Lott Inc.**  
 522 West 10th Street  
 Juneau, Alaska 99801  
 phone 907-586-1070  
 fax 907-586-3959  
 jensenyorbaltott.com

**R & M ENGINEERING, INC.**  
 6205 GLACIER HIGHWAY  
 JUNEAU, AK. 99801  
 Phone 907-780-6060  
 Fax 907-780-4611  
 rmengineering@rmjuneau.com



City and Borough of Juneau - Juneau School District  
**Auke Bay Elementary School Renovation**  
 CBJ Project No. E12-042  
 Juneau, Alaska

REVISIONS

SHEET TITLE  
**SIGNING AND STRIPING PLAN**

DATE: December 21, 2011  
 FILE: 10036

**C500**





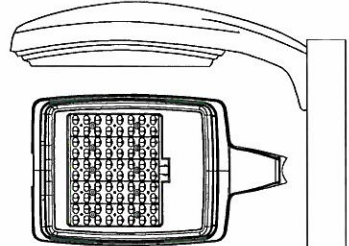
Job:  
Type:  
Notes:



# Gullwing LED

## GL13 Area Luminaires

Philips Gardco Gullwing LED luminaires combine LED performance excellence and advanced Philips Gardco LED thermal management technology with the distinct Gullwing style to provide outdoor area lighting that is both energy efficient and aesthetically pleasing. The Philips Gardco Gullwing LED is defined by its high performance, sleek profile and rugged construction. The housing is one-piece, die cast aluminum and mounts directly to a pole or wall without the need of a separate support arm. The advanced LED optical systems provide IES Types II, III, IV and V distributions. The luminaire features a state of the art integral thermal control system to maximize LED performance and life, and to extend component life. All LED wattages utilize high performance Class I LED systems. The door frame is single-piece die cast aluminum, and includes a tempered glass lens. Luminaires are finished with a fade and abrasion resistant TGIC powdercoat. Gullwing LED luminaires provide full cutoff performance.



PREFIX	MOUNTING	OPTICAL SYSTEM	LED WATTAGE	LED SELECTION	VOLTAGE	FINISH	OPTIONS
<input type="text"/>	<input type="text"/>	<input type="text"/>	<input type="text"/>	<input type="text"/>	<input type="text"/>	<input type="text"/>	<input type="text"/>

Enter the order code into the appropriate box above. Note: Philips Gardco reserves the right to refuse a configuration. Not all combinations and configurations are valid. Refer to notes below for exclusions and limitations. For questions or concerns, please consult the factory.

PREFIX		MOUNTING		OPTICAL SYSTEM	
<u>Complete Luminaires</u>		1	Single Pole Mount	2 <sup>2</sup>	Type II
GL13	13" Gullwing LED Luminaire - Constant Wattage	2	Twin Pole Mount at 180°	3 <sup>2</sup>	Type III
GL13-DIM	13" Gullwing LED Luminaire - with 0-10V Dimming	2@90	Twin Pole Mount at 90°	4 <sup>2</sup>	Type IV
		3	3-way Pole Mount at 90°	5 <sup>2</sup>	Type V
		3@120 <sup>1</sup>	3-way Pole Mount at 120°		
		4	4-way Pole Mount		
		W	Wall Mount, Recessed J-box		
		WS	Wall Mount, Surface Conduit		

Retrofit Kits for existing Gullwing 13" HID luminaires are available. See Legacy LED Retrofit Kits Submittal Data Sheet (G200-21) for Retrofit Kit information.

1. Not available with PTF option. 2. Optics are field rotatable. 3. Features unitized lens.

### LED WATTAGE AND LUMEN VALUES

Ordering Code	Average System Watts <sup>4</sup>	LED Current (mA)	LED Selection	Luminaire Initial Absolute Lumens <sup>5,6</sup>				Basis of Lumen Data
				TYPE 2	TYPE 3	TYPE 4	TYPE 5	
70LA	71.2	350	CW	5,858	6,177	6,008	5,853	Photometric tests performed in compliance with IESNA LM-79.
			NW	5,636	5,854	5,696	5,479	
85LA	85.9	350	CW	7,531	7,714	7,495	7,384	
			NW	6,973	7,143	6,940	6,837	

4. Wattage may vary by +/- 8% due to LED manufacturer forward volt specification and ambient temperature. Wattage shown is average for 120V through 277V input. Actual wattage may vary by an additional +/- 10% due to actual input voltage.  
5. Values shown are for luminaires without the HS external shield option. Tests are in process for luminaires with the HS option and WW luminaires. Contact Gardco.applications@philips.com if approximate estimates are required for design purposes.  
6. LED arrays feature LEDs that provide from 100 to 130 lumens per watt when operated at 350 mA. Lumen values based on tests performed in compliance with IESNA LM-79.

1611 Clovis Barker Road, San Marcos, TX 78666  
(800) 227-0758 (512) 753-1000 FAX: (512) 753-7855 sitelighting.com

© 2011 Koninklijke Philips Electronics N.V. All Rights Reserved.  
Philips Gardco reserves the right to change materials or modify the design of its product without notification as part of the company's continuing product improvement program.

G200-017/0811

PHILIPS







# Gullwing LED

## GLI3Area Luminaires

### LUMINAIRE CONFIGURATION INFORMATION

**GLI3:** Philips Gardco Gullwing 13" LED standard luminaire providing constant wattage and constant light output when power to the luminaire is energized.

**GLI3-DIM:** Philips Gardco Gullwing 13" LED luminaire provided with 0 -10V dimming for connection to a control system provided by others.

### SPECIFICATIONS

**GENERAL DESCRIPTION:** The Philips Gardco Gullwing LED is defined by its high performance, sleek profile and rugged construction. The housing is one-piece, die cast aluminum and mounts directly to a pole or wall without the need of a separate support arm. Gullwing LED luminaires combine LED performance excellence and advanced Philips Gardco LED thermal management technology with the distinct Gullwing style to provide outdoor area lighting and pedestrian scale lighting that is both energy efficient and aesthetically pleasing.

**HOUSING:** A one-piece die cast aluminum housing mounts directly to a pole or wall without the need for a support arm. The low profile rounded form reduces the effective projected area of the luminaire to only 0.8 ft<sup>2</sup> / .07 m<sup>2</sup>.

#### LED RELIABILITY:

PREDICTED LUMEN DEPRECIATION DATA		
Ambient Temperature °C	LED Wattage / Driver mA	L <sub>70</sub> Hours <sup>13</sup>
25 °C	70LA or 85LA / 350 mA	150,000
40 °C	70LA or 85LA / 350 mA	100,000

13. Predicted performance derived from LED manufacturer's data and engineering design estimates, based on IESNA LM-80 methodology. Actual experience may vary due to field application conditions. L<sub>70</sub> is the predicted time when LED performance depreciates to 70% of initial lumen output.

**THERMAL MANAGEMENT:** The Philips Gardco Gullwing LED provides extruded aluminum integral thermal radiation fins to provide the excellent thermal management so critical to long LED system life.

**OPTICAL SYSTEMS:** Lensed LED arrays are set to achieve IES Type II, Type III, Type IV and Type V distributions. Individual LED arrays are replaceable. Types II, III and IV optical systems are field rotatable. Luminaires feature high performance Class I LED systems, and include a tempered glass lens.

**ELECTRICAL:** Luminaires are equipped with an LED driver that accepts 120V through 277V, or 347V through 480V, 50hz to 60hz, input. Driver output is based on the LED wattage selected. Component-to-component wiring within the luminaire will carry no more than 80% of rated current and is listed by UL for use at 600 VAC at 302°F / 150°C or higher. Plug disconnects are listed by UL for use at 600 VAC, 15A or higher. Power factor is not less than 90%. Luminaire consumes 0.0 watts in the off state.

**FINISH:** Each standard color luminaire receives a fade and abrasion resistant, electrostatically applied, thermally cured, triglycidal isocyanurate (TGIC) textured polyester powdercoat finish. Standard colors include bronze (BRP), black (BLP), white (WPP), and natural aluminum (NP). Consult factory for specs on optional or custom colors.

**LABELS:** All luminaires bear UL or CUL (where applicable) Wet Location labels.







**WARRANTY:** Philips Gardco luminaires feature a 5 year limited warranty. Philips Gardco LED luminaires with LED arrays feature a 5 year limited warranty covering the LED arrays. See Warranty Information on [www.sitelighting.com](http://www.sitelighting.com) for complete details and exclusions.

**FULL CUTOFF PERFORMANCE:** Full cutoff performance means a luminaire distribution where zero candela intensity occurs at an angle at or above 90° above nadir. Additionally, the candela per 1000 lamp lumens does not numerically exceed 100 (10 percent) at a vertical angle of 80° above nadir. This applies to all lateral angles around the luminaire.

**CUTOFF PERFORMANCE:** Cutoff performance means a luminaire distribution where the candela per 1000 lamp lumens does not numerically exceed 25 (2.5 percent) at an angle at or above 90° above nadir, and 100 (10 percent) at a vertical angle of 80° above nadir. This applies to all lateral angles around the luminaire.



**Legend**

-  Project Limits
-  Existing Road
-  Project Area Expansion
-  Existing Culvert
-  DOT Project #69003
-  Eagle Nest Location



- Project Improvements**
- ① Construct intersection improvements that may include a roundabout at Glacier Highway, Fritz Cove Road, and Auke Lake/University Way.
  - ② Construct sidewalks along both sides of Glacier Highway from Fritz Cove Road to Seaview Avenue.
  - ③ Roadway realignment at Auke Bay Lab with an addition of a left turn lane at the Lab entrance.
  - ④ Lighting along entire corridor.
  - ⑤ Reconstruction of roadway to provide 2-12' lanes with 8' shoulders.
  - ⑥ Reconstruction of roadway to provide 2-12' lanes, 1-14' center turn lane with 8' shoulders.

PREPARED BY USKH

STATE OF ALASKA  
DEPARTMENT OF TRANSPORTATION  
AND PUBLIC FACILITIES  
SOUTHEAST REGION

Glacier Hwy: Fritz Cove Rd to  
Seaview Avenue Safety Improvements

PROJECT LIMITS AND SITE PLAN

DOT&PF Project No. #68471	FIGURE
DATE: January 2012	2

I:\1289400\Drawings\Figures\Scoping\1289400\_SC\_Fig-02.dwg



**Eric Feldt**

---

**From:** Dan Jager  
**Sent:** Tuesday, March 13, 2012 3:05 PM  
**To:** Eric Feldt  
**Cc:** Rich Etheridge; Sven Pearson; Catherine Wilkins  
**Subject:** RE: Auke Bay Ele. Sch. Remodel

Eric, thanks for passing this along for review. Yes, it looks like improved access towards the back of the school would help us out. By getting our apparatus to an area that is a little shorter is a big help and our ground ladders should be able to access the roof area in this portion of the school. Thanks.  
Dan

---

**From:** Eric Feldt  
**Sent:** Tuesday, March 13, 2012 10:24 AM  
**To:** Dan Jager  
**Cc:** Rich Etheridge; Sven Pearson  
**Subject:** RE: Auke Bay Ele. Sch. Remodel

Dan,

With a new driveway being constructed towards the back of the school building that will enable access near the front (taller part of the building), will the height issue still be a concern? The attachment is of drawings pertinent for Planning Commission review. This back access driveway is shown on the second and last pages.

Sincerely,

**Eric Feldt, Planner II, C.F.M.**  
**Community Development Dept.**  
**155 South Seward Street**  
**City & Borough of Juneau, Alaska**  
**Ph: (907) 586-0764**  
**Fax: (907) 586-3365**



Please consider the environment before printing this email.

---

**From:** Dan Jager  
**Sent:** Monday, January 30, 2012 2:07 PM  
**To:** Eric Feldt; Charlie Ford; Ron King; Heather Marlow; 'Greg Browning'  
**Cc:** Rich Etheridge; Sven Pearson  
**Subject:** RE: Auke Bay Ele. Sch. Remodel

Good afternoon Eric. The Fire Chief wanted me to relay that if the building is going to increase in height that it will start impacting fire department operations and the need for an aerial ladder truck will need to be in play. This is a concern for the fire department for any buildings that are over 35 feet in height. A new ladder truck runs about \$1.2 million at this time and we do not have any ladders tall enough at the Auke Bay station that is the closest station to this building. It is a big deal as far as Insurance Service Organization (ISO) is concerned with regards to the fire departments ability to adequately provide fire response should a significant fire occur in this building. We are several years away from being able to purchase a new ladder truck at this time. Let me know if you need any further information. Thanks for the chance to comment.



Dan

---

**From:** Eric Feldt  
**Sent:** Monday, January 30, 2012 11:11 AM  
**To:** Dan Jager; Charlie Ford; Ron King; Heather Marlow; 'Greg Browning'  
**Subject:** Auke Bay Ele. Sch. Remodel

I am reviewing a City consistency permit for the remodeling of Auke Bay Elementary School building and site. I have attached some site plans, floor plans, and elevation drawings in this email. There are plenty more detailed drawings too. In short, nearly the whole building is being renovated with the same number of classrooms, a new gymnasium, larger library, and larger HVAC penthouses (taller building: +40 feet). The entire parking lot is being reconfigured with two separate driving lanes: one for buses and one for parents; two separate parking lots: one for staff and one for visitors.

My review at this time is only to determine if the project is consistent with the Land Use Code and the Comprehensive Plan. If you have any recommendations that may result in substantial changes to the number of classrooms, building mass/ height, parking areas, or other items the commission needs to know please let me know.

Please submit any comments you may have by next Monday, February 6<sup>th</sup>. Also, please let me know if you want to see any other building/ site plans.

Thank you,

**Eric Feldt, Planner II, C.F.M.**  
**Community Development Dept.**  
**155 South Seward Street**  
**City & Borough of Juneau, Alaska**  
**Ph: (907) 586-0764**  
**Fax: (907) 586-3365**



Please consider the environment before printing this email.