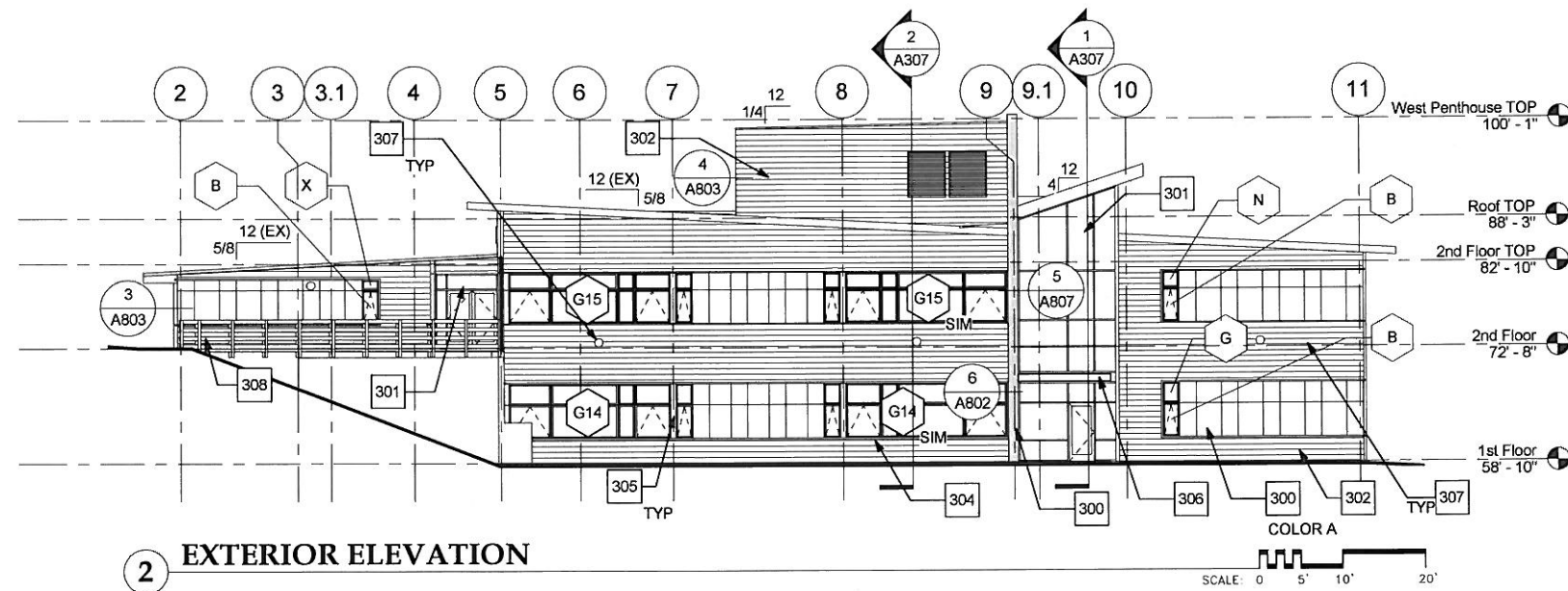
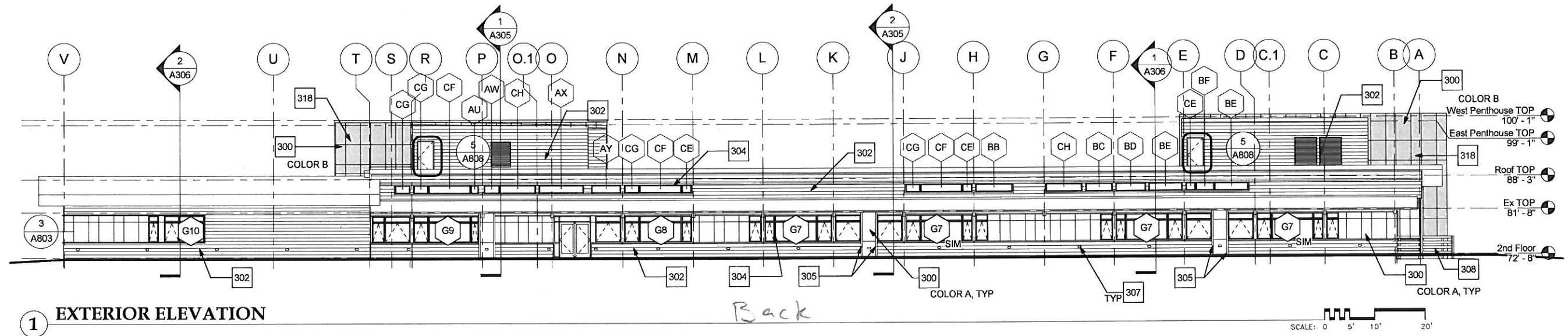


**Jensen  
Yorba  
Lott  
Inc.**

522 West 10th Street  
Juneau, Alaska 99801  
Phone 907-586-1070  
Fax 907-586-3959  
jensenyorbалott.com



City and Borough of Juneau - Juneau School District  
**Auke Bay Elementary  
School Renovation**  
CBJ Project No. E12-042  
Juneau, Alaska



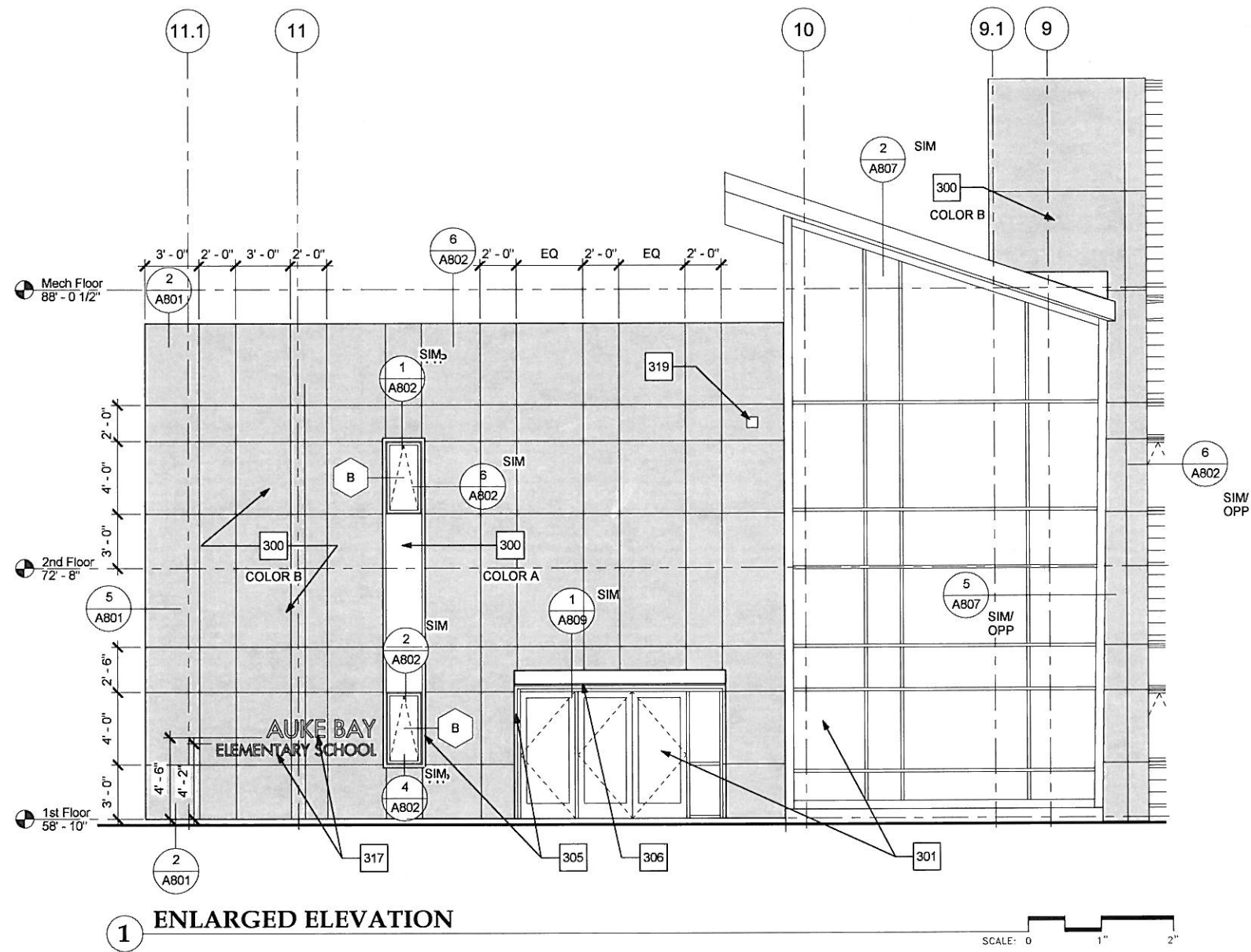
REVISIONS



SHEET TITLE  
EXTERIOR  
ELEVATIONS

DATE: December 21, 2011  
FILE: 10036

**A302**



1 ENLARGED ELEVATION



Jensen  
Yorba  
Lott  
Inc.  
522 West 10th Street  
Juneau, Alaska 99801  
Phone 907-586-1070  
Fax 907-586-3959  
jensenyorbaltott.com



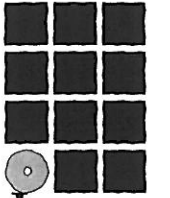
City and Borough of Juneau - Juneau School District  
**Auke Bay Elementary  
 School Renovation**  
 CBJ Project No. E12-042  
 Juneau, Alaska

REVISIONS
△
△
△

SHEET TITLE  
 ENLARGED  
 ELEVATIONS

DATE: December 21, 2011  
 FILE: 10036

**A303**

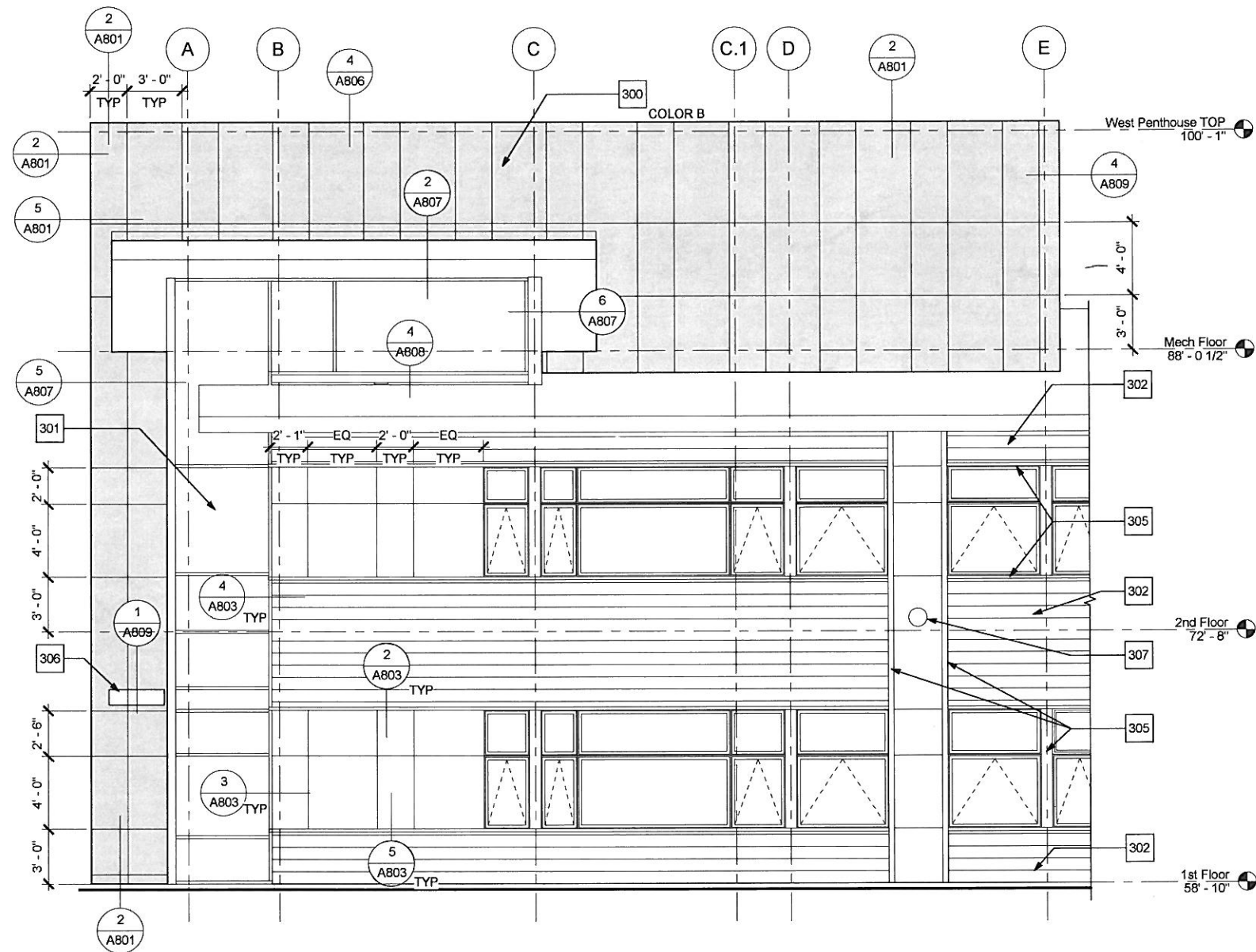


**Jensen  
Yorba  
Lott**  
Inc.

522 West 10th Street  
Juneau, Alaska 99801  
Phone 907-586-1070  
Fax 907-586-3959  
jensenyorbalott.com



City and Borough of Juneau - Juneau School District  
**Auke Bay Elementary  
School Renovation**  
CBJ Project No. E12-042  
Juneau, Alaska



**1 ENLARGED ELEVATION**

SCALE: 0 2' 4' 8'

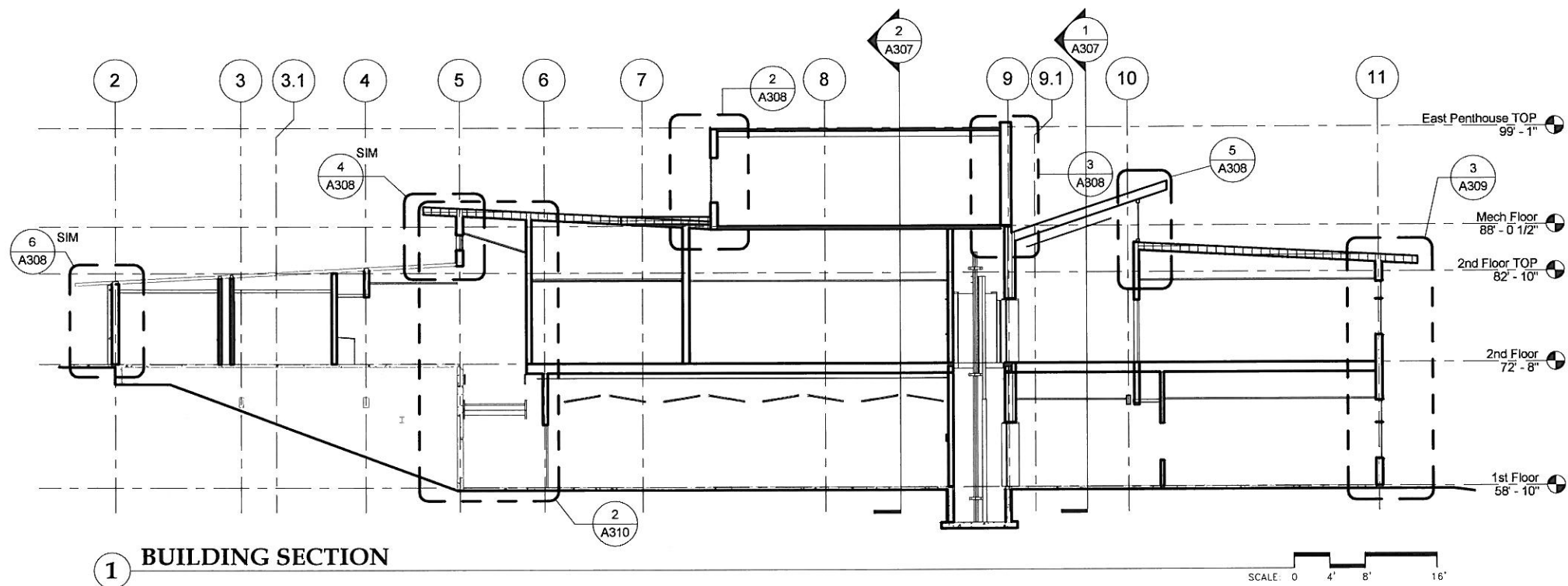
REVISIONS



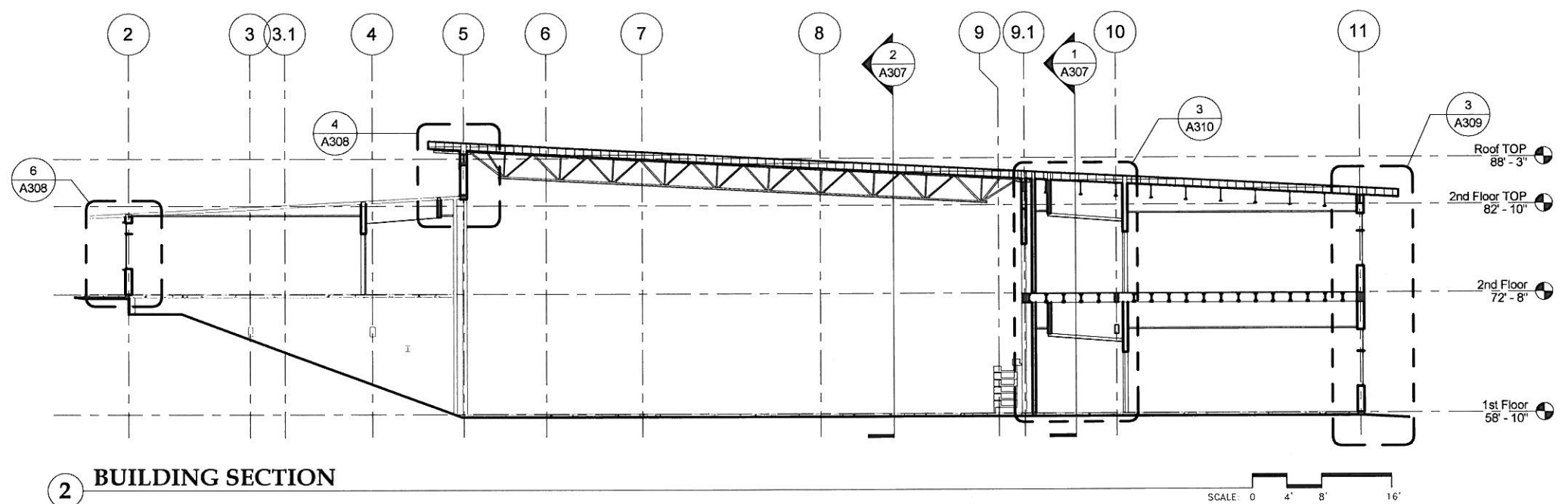
SHEET TITLE  
**ENLARGED  
ELEVATION**

DATE: December 21, 2011  
FILE: 10036

**A304**



1 BUILDING SECTION



2 BUILDING SECTION

**Jensen  
Yorba  
Lott  
Inc.**  
522 West 10th Street  
Juneau, Alaska 99801  
Phone 907-586-1070  
Fax 907-586-3959  
jensenyorbalott.com



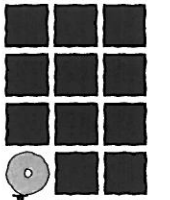
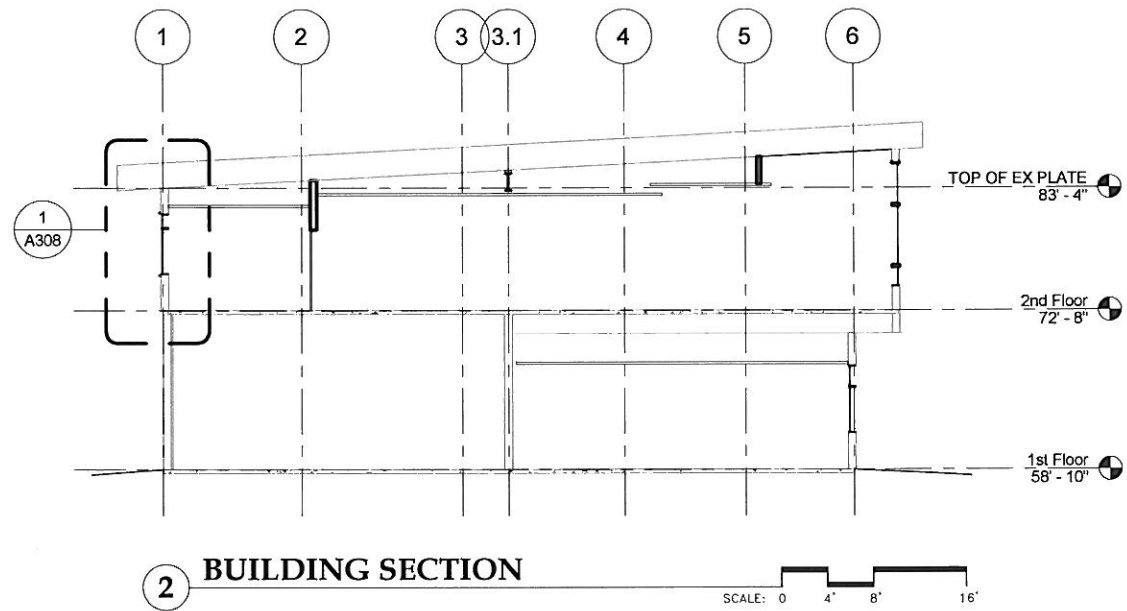
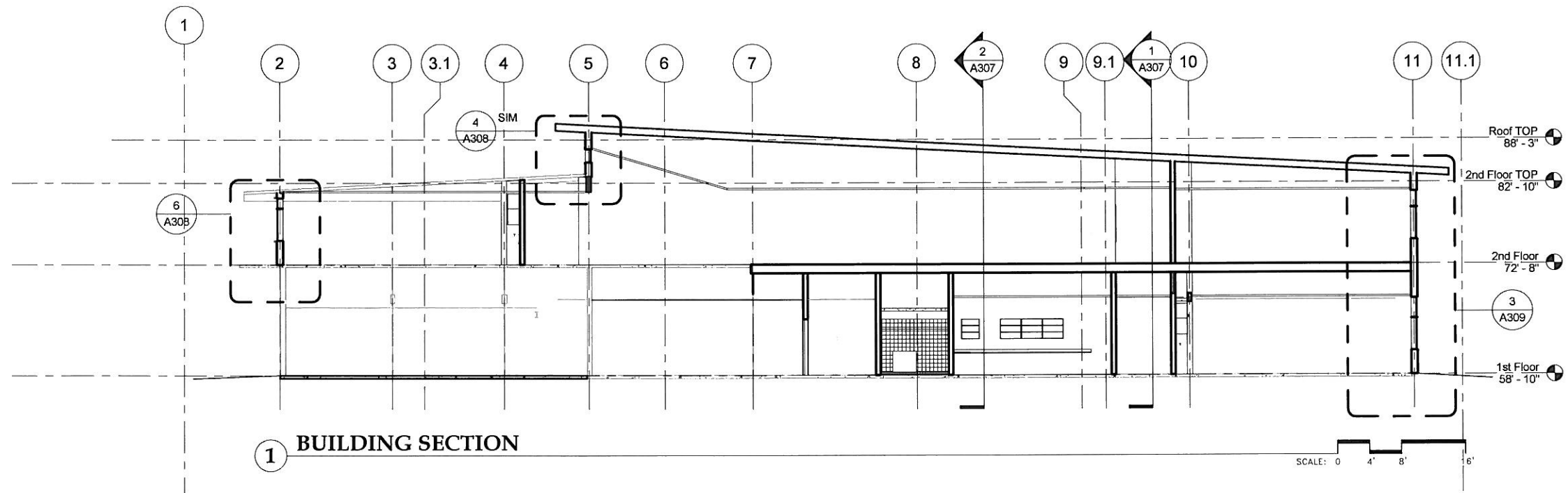
City and Borough of Juneau - Juneau School District  
**Auke Bay Elementary  
School Renovation**  
CBJ Project No. E12-042  
Juneau, Alaska

REVISIONS
△
△
△

SHEET TITLE  
**BUILDING  
SECTIONS**

DATE December 21, 2011  
FILE 10036

**A305**



**Jensen  
Yorba  
Lott  
Inc.**

522 West 10th Street  
Juneau, Alaska 99801  
Phone 907-586-1070  
Fax 907-586-3959  
jensenyorbaltott.com



City and Borough of Juneau - Juneau School District  
**Auke Bay Elementary  
School Renovation**  
CBJ Project No. E12-042  
Juneau, Alaska

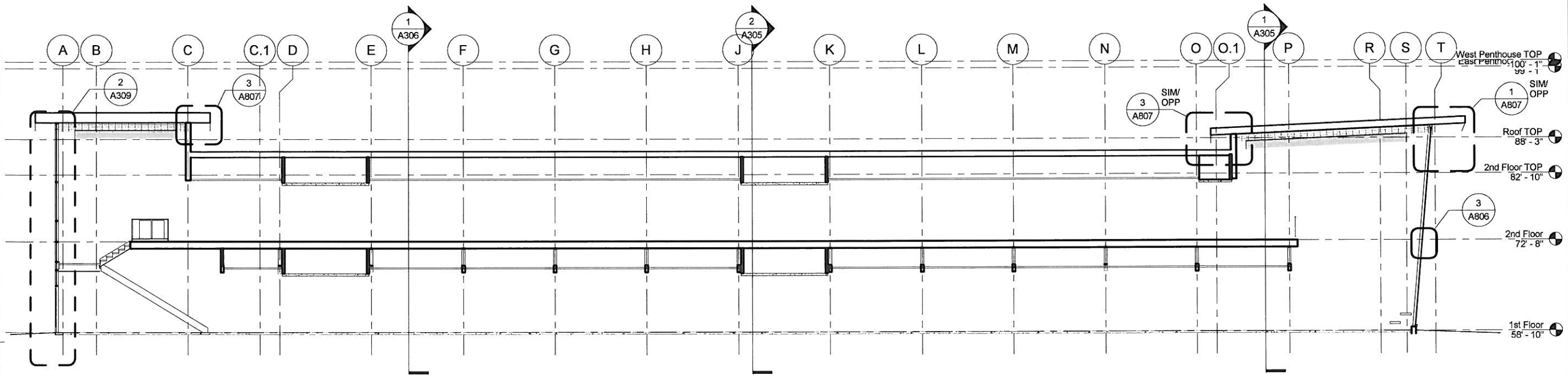
REVISIONS



SHEET TITLE  
**BUILDING  
SECTIONS**

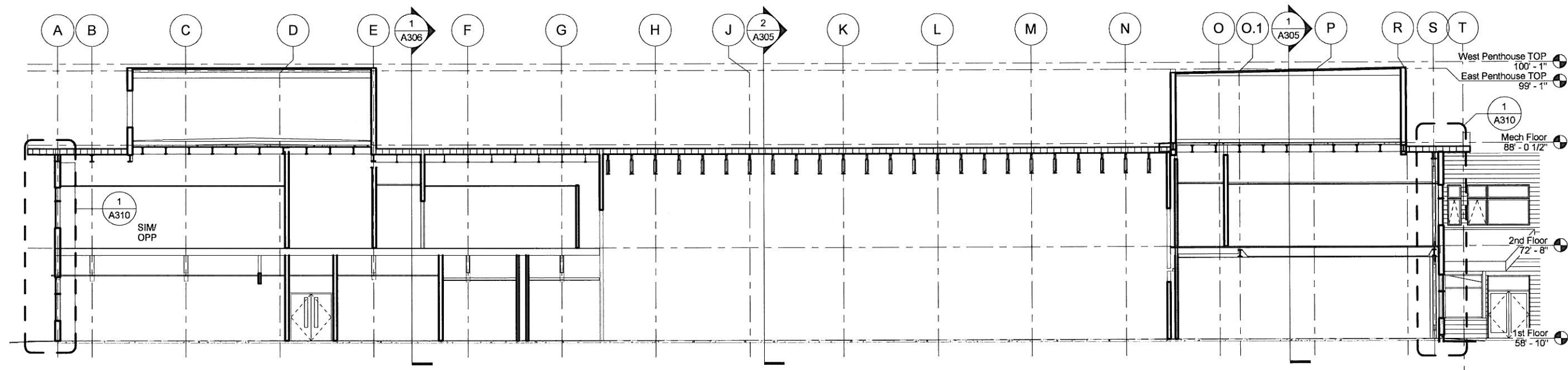
DATE: December 21, 2011  
FILE: 10036

**A306**



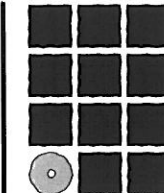
1 BUILDING SECTION

SCALE: 0 4' 8' 16'



2 BUILDING SECTION

SCALE: 0 4' 8' 16'



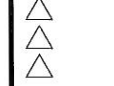
**Jensen  
Yorba  
Lott  
Inc.**

522 West 10th Street  
Juneau, Alaska 99801  
Phone 907-586-1070  
Fax 907-586-3959  
jensenyorbалott.com



City and Borough of Juneau - Juneau School District  
**Auke Bay Elementary  
School Renovation**  
CBJ Project No. E12-042  
Juneau, Alaska

REVISIONS

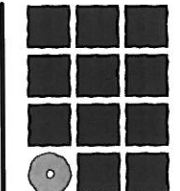


SHEET TITLE  
**BUILDING  
SECTIONS**

DATE: December 21, 2011  
FILE: 10036

**A307**





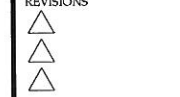
**Jensen  
Yorba  
Lott  
Inc.**

522 West 10th Street  
Juneau, Alaska 99801  
Phone 907-586-1070  
Fax 907-586-3959  
jensenyorbaltott.com



City and Borough of Juneau - Juneau School District  
**Auke Bay Elementary  
School Renovation**  
CBJ Project No. E12-042  
Juneau, Alaska

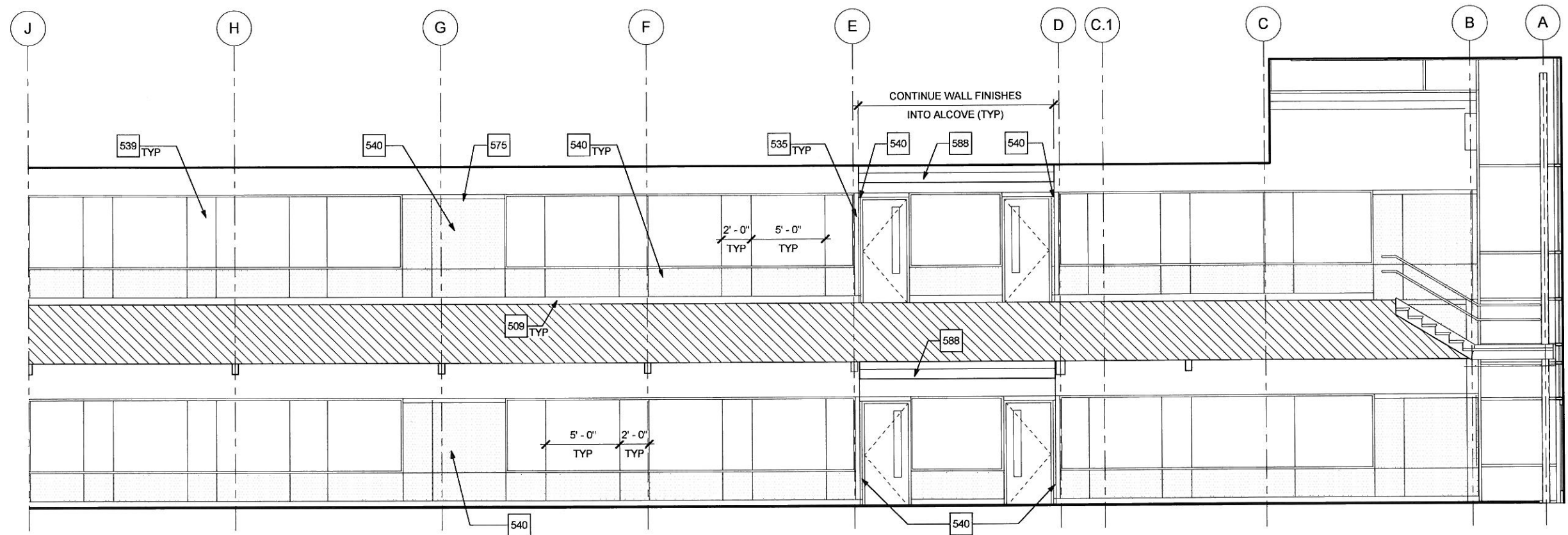
REVISIONS



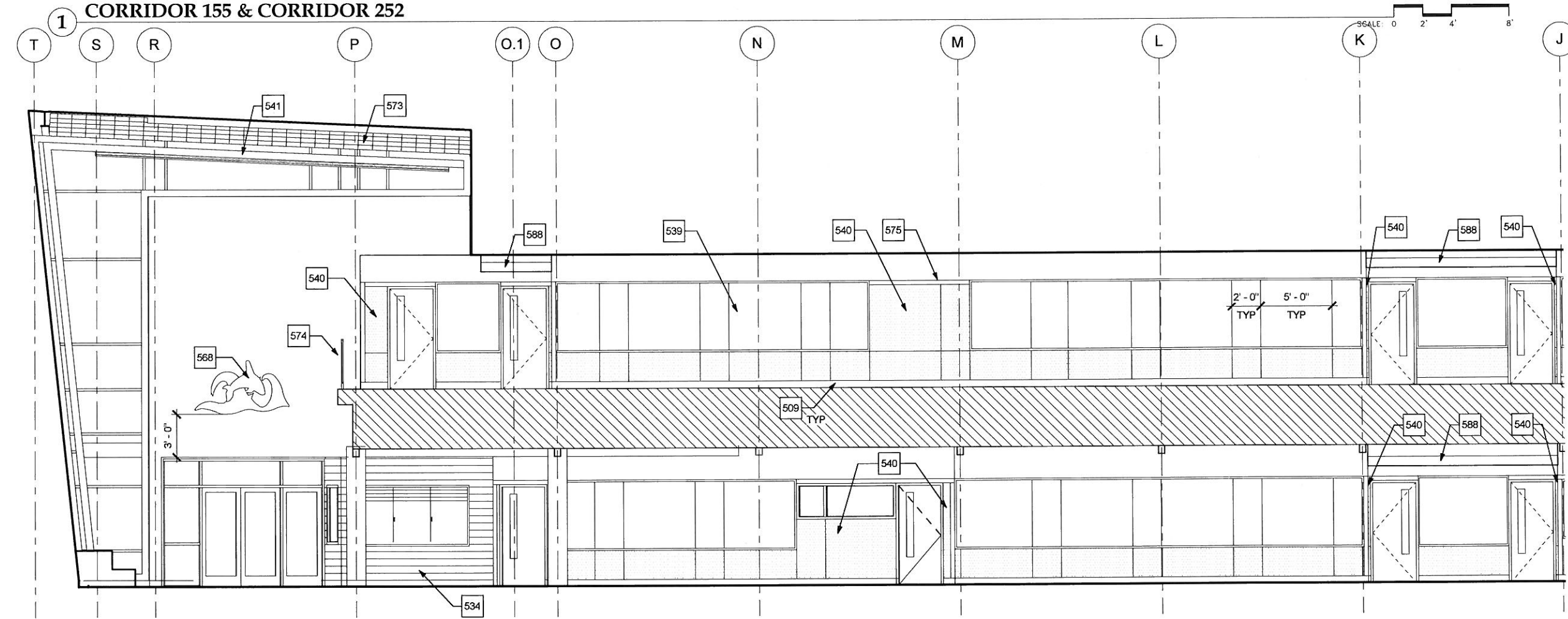
SHEET TITLE  
**INTERIOR  
ELEVATIONS**

DATE: December 21, 2011  
FILE: 10036

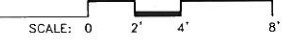
**A505**



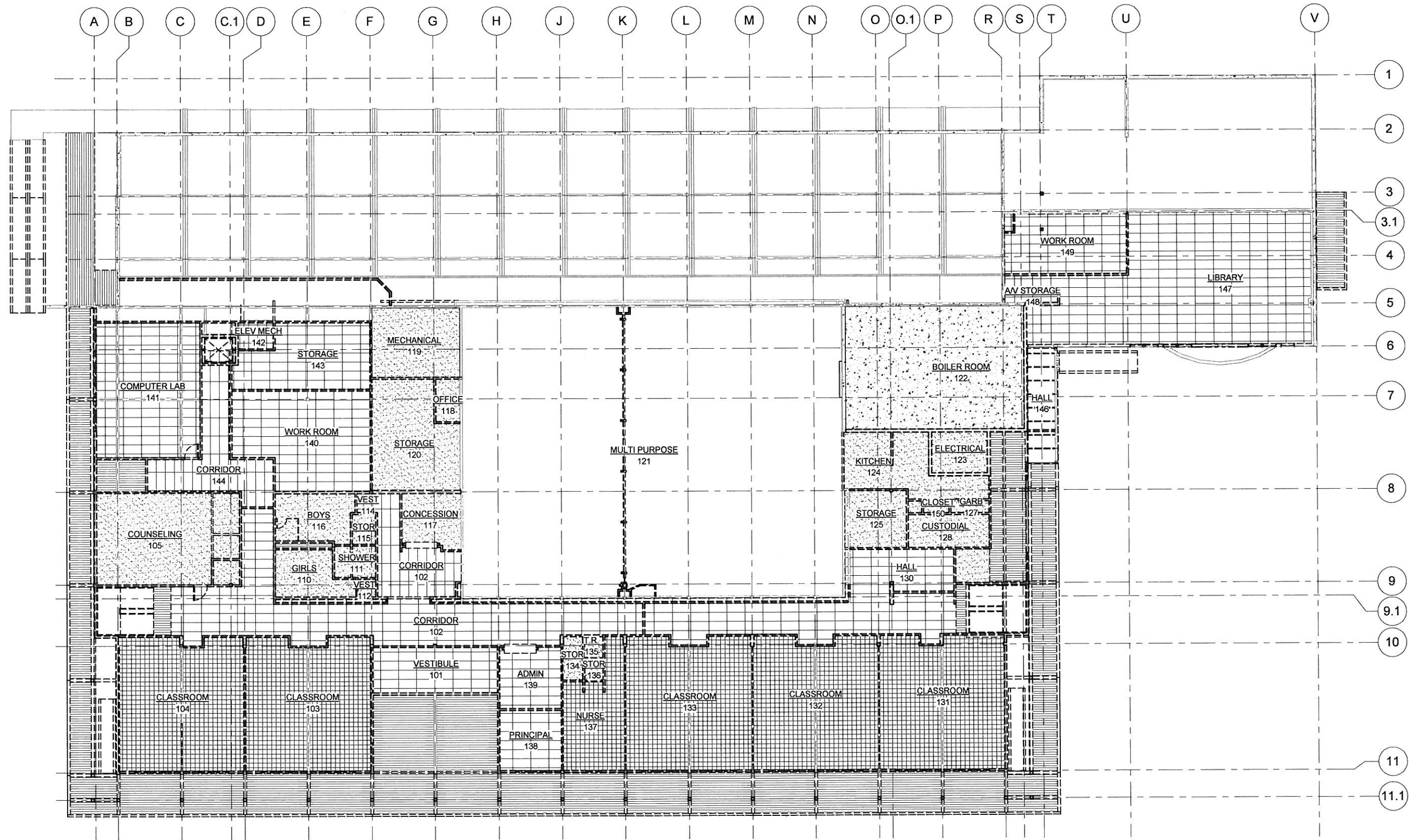
**1 CORRIDOR 155 & CORRIDOR 252**



**2 CORRIDOR 155 & CORRIDOR 252**

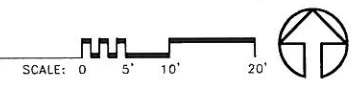


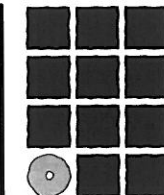




**1 FIRST FLOOR DEMOLITION REFLECTED CEILING PLAN**

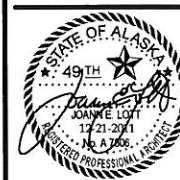
- LEGEND: DEMOLITION REFLECTED CEILING PLAN**
- REMOVE 12"x12" ACOUSTICAL CEILING TILE
  - REMOVE GWB CEILING
  - REMOVE CONCRETE FLOOR SLAB ABOVE
  - REMOVE 24"x24" OR 24"x48" SUSPENDED ACOUSTICAL CEILING SYSTEM
  - REMOVE WOOD DECK OR EAVE





**Jensen  
Yorba  
Lott  
Inc.**

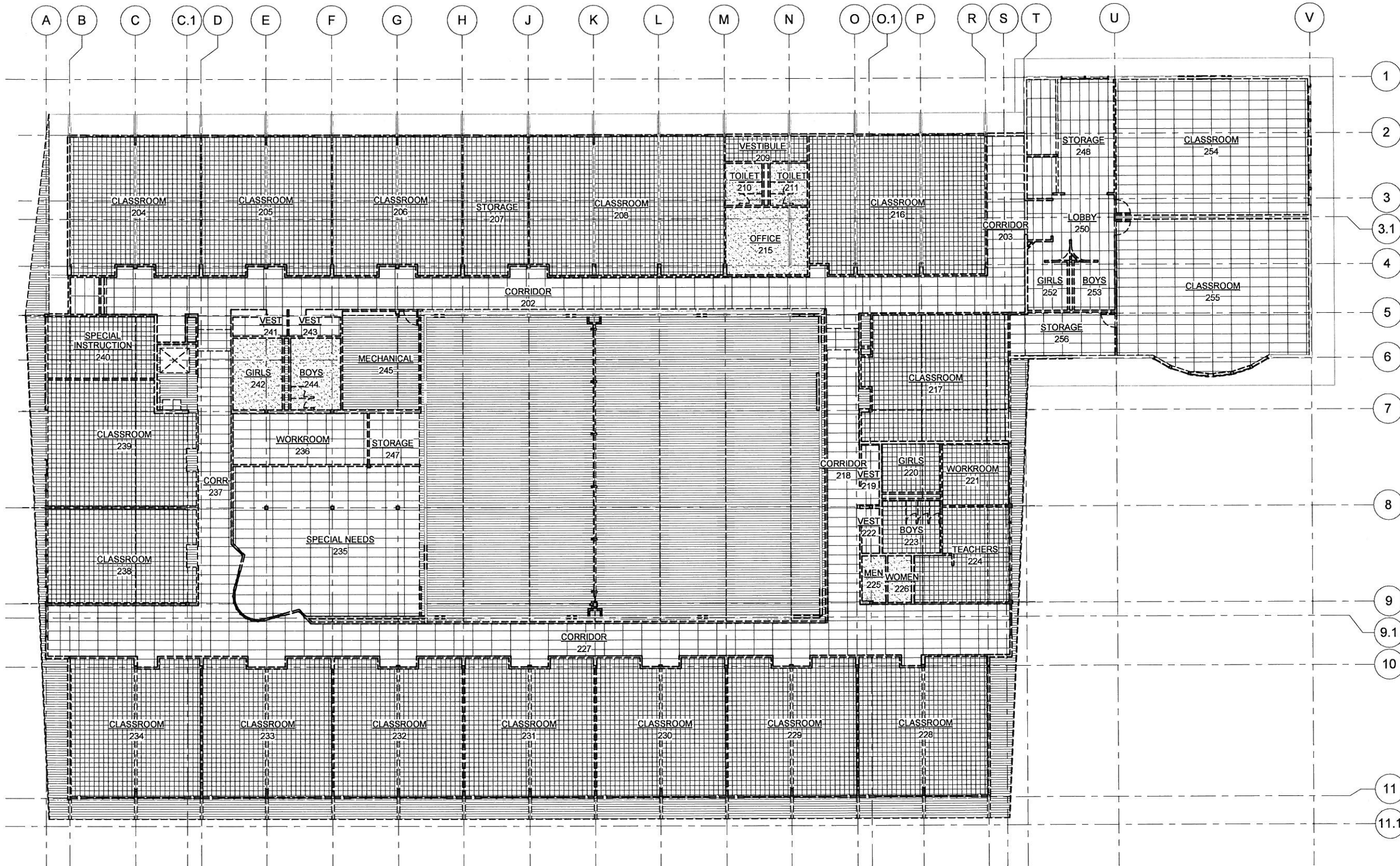
522 West 10th Street  
Juneau, Alaska 99801  
Phone 907-586-1070  
Fax 907-586-3959  
jensenyorbaltott.com



City and Borough of Juneau - Juneau School District  
**Auke Bay Elementary  
School Renovation**  
CBJ Project No. E12-042  
Juneau, Alaska

REVISIONS  
▲  
▲  
▲  
SHEET TITLE  
SECOND FLOOR  
DEMOLITION  
REFLECTED CEILING  
PLAN  
DATE: December 21, 2011  
FILE: 10036

**AD602**



**1 SECOND FLOOR DEMOLITION REFLECTED CEILING PLAN**

**LEGEND: DEMOLITION REFLECTED CEILING PLAN**

- REMOVE 12"x12" ACOUSTICAL CEILING TILE
- REMOVE GWB CEILING
- REMOVE CONCRETE FLOOR SLAB ABOVE
- REMOVE 24"x24" OR 24"x48" SUSPENDED ACOUSTICAL CEILING SYSTEM
- REMOVE WOOD DECK OR EAVE

