



Image Date: June 2006



2,000 Feet

1,000

500

0

This is not a survey. Property lines are approximate

ATTACHMENT A

SHEET NOTES SITE PHASING

① PHASE 1

- AREA OF WORK
- 1a WEST PARKING LOT:
EXCAVATE & FILL FOR WEST PARKING LOT
INSTALL GROUND SOURCE HEAT WELLS & PIPING
INSTALL SUBSURFACE DRAINAGE PIPING
INSTALL UTILITIES
PREPARE GRAVEL SURFACE WITH 95% COMPACTION FOR PARKING DURING PHASE 2
OWNER TO OCCUPY WEST PARKING LOT DURING PHASE 2
- 1b TRENCHING DEMOLITION & INSTALLATION OF UTILITIES AS REQ.
PATCH SURFACE WITH COMPACTED GRAVEL FLUSH WITH PAVING FOR OWNER USE
DURING PHASE 2. TYP WHERE SHOWN
- 1c EXCAVATION, GRADING, FILLING SUB BASE PREP FOR PHASE 3 SITE WORK
- 1d CONSTRUCTION OF RETAINING WALL
- 1e CONSTRUCTION OF ROAD (EXCEPT PAVING)
- 1f SUBSURFACE DRAINAGE

② PHASE 2

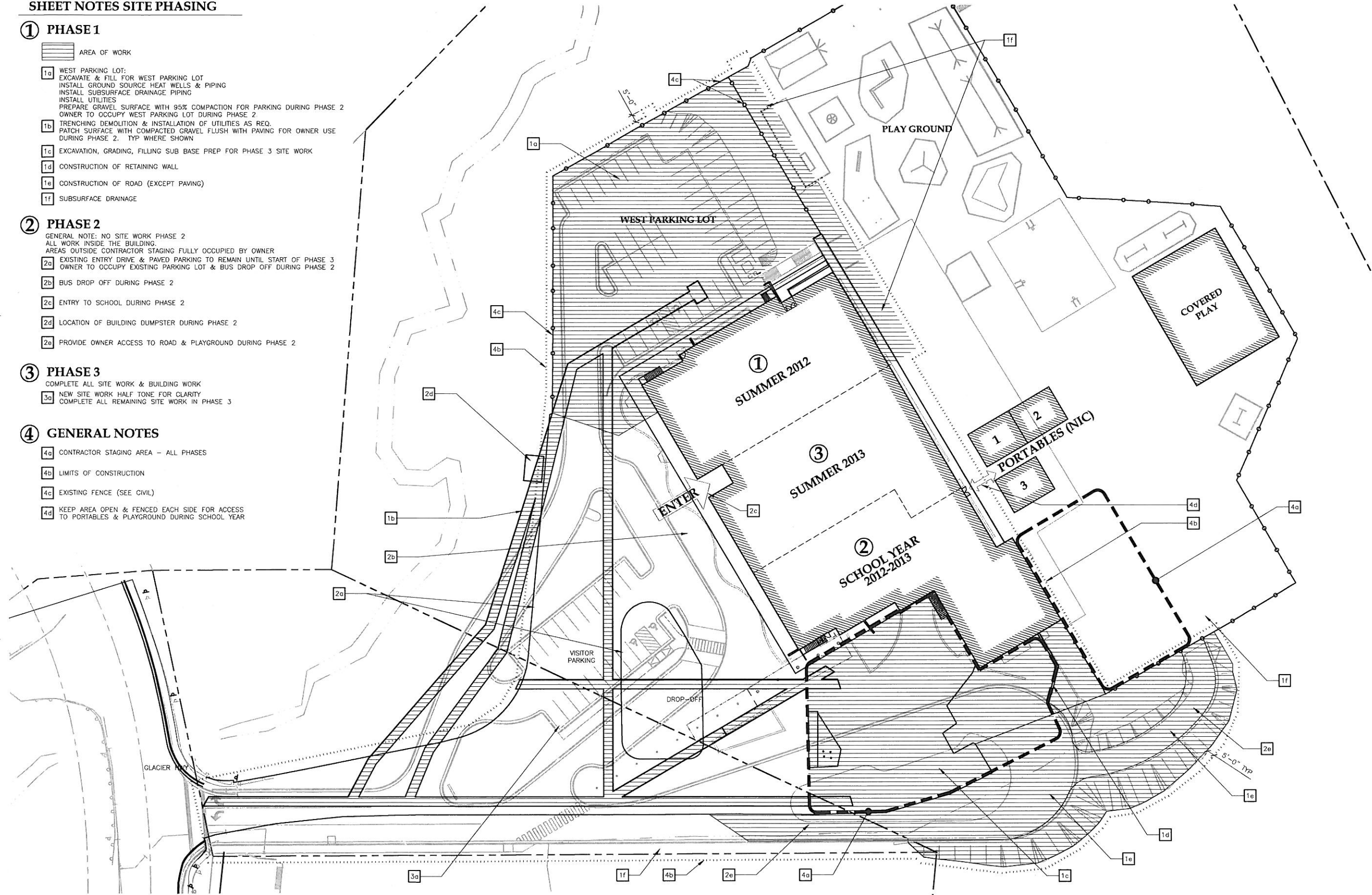
- GENERAL NOTE: NO SITE WORK PHASE 2
ALL WORK INSIDE THE BUILDING
AREAS OUTSIDE CONTRACTOR STAGING FULLY OCCUPIED BY OWNER
- 2a EXISTING ENTRY DRIVE & PAVED PARKING TO REMAIN UNTIL START OF PHASE 3
OWNER TO OCCUPY EXISTING PARKING LOT & BUS DROP OFF DURING PHASE 2
 - 2b BUS DROP OFF DURING PHASE 2
 - 2c ENTRY TO SCHOOL DURING PHASE 2
 - 2d LOCATION OF BUILDING DUMPSTER DURING PHASE 2
 - 2e PROVIDE OWNER ACCESS TO ROAD & PLAYGROUND DURING PHASE 2

③ PHASE 3

- COMPLETE ALL SITE WORK & BUILDING WORK
NEW SITE WORK HALF TONE FOR CLARITY
COMPLETE ALL REMAINING SITE WORK IN PHASE 3

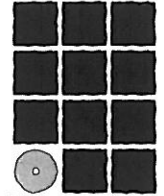
④ GENERAL NOTES

- 4a CONTRACTOR STAGING AREA - ALL PHASES
- 4b LIMITS OF CONSTRUCTION
- 4c EXISTING FENCE (SEE CIVIL)
- 4d KEEP AREA OPEN & FENCED EACH SIDE FOR ACCESS
TO PORTABLES & PLAYGROUND DURING SCHOOL YEAR



1 PHASING PLAN

SCALE: 0' 15' 30' 60'



**Jensen
Yorba
Lott
Inc.**

522 West 10th Street
Juneau, Alaska 99801
phone 907-586-1070
fax 907-586-3959
jensenyorbалott.com



City and Borough of Juneau - Juneau School District
**Auke Bay Elementary
School Renovation**
CBJ Project No. E12-042
Juneau, Alaska

REVISIONS

△	
△	
△	

SHEET TITLE
**SITE PHASING
& CONSTRUCTION
STAGING**

DATE: December 21, 2011
FILE: 10036

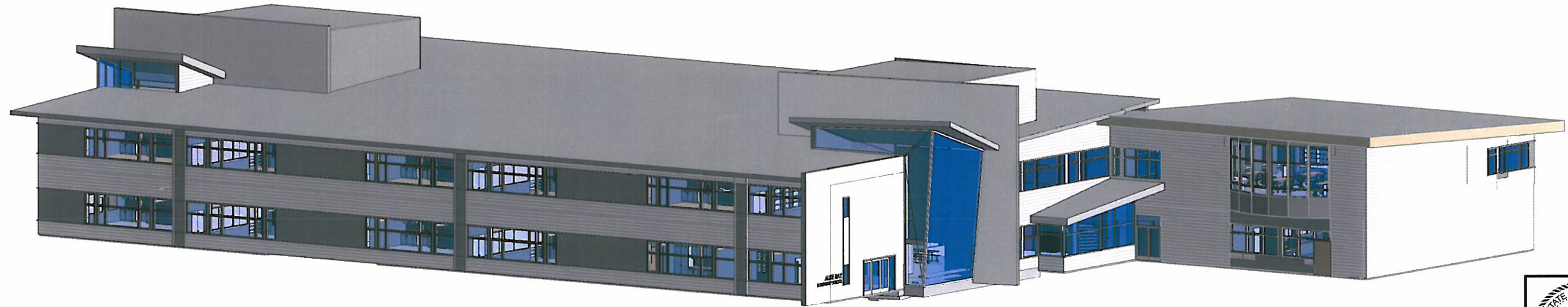
A101

ATTACHMENT B

City and Borough of Juneau - Juneau School District
**Auke Bay Elementary
School Renovation**

Juneau, Alaska
CBJ Project No. E12-042
December 21, 2011

VOLUME 1



ARCHITECT
JENSEN YORBA LOTT, INC
522 WEST 10TH STREET
JUNEAU, ALASKA 99801
(907) 586-1070
FAX (907) 586-3959

LANDSCAPE ARCHITECT
CORVUS DESIGN - SOUTHEAST
119 SEWARD STREET, SUITE 15
JUNEAU, ALASKA 99801
(907) 988-9000

STRUCTURAL ENGINEER
PND ENGINEERS, INC.
CONSULTING ENGINEERS
9360 GLACIER HIGHWAY, SUITE 100
JUNEAU, ALASKA 99801
(907) 586-2093
FAX (907) 586-2099

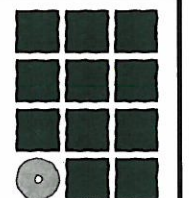
ELECTRICAL ENGINEER
HAIGHT & ASSOCIATES, INC.
526 MAIN STREET
JUNEAU, ALASKA 99801
(907) 586-9788
FAX (907) 586-5774

FOOD SERVICE
ARCTIC FOOD SERVICE
DESIGN
1901 WEST TUDOR ROAD
ANCHORAGE, ALASKA 99517
(907) 243-3556

CIVIL ENGINEER
R&M ENGINEERING, INC.
6205 GLACIER HIGHWAY
JUNEAU, ALASKA 99801
(907) 780-6060
FAX (907) 780-4611

MECHANICAL ENGINEER
MURRAY & ASSOCIATES, P.C.
P.O. BOX 21081
JUNEAU, ALASKA 99802
(907) 780-6151
FAX (907) 780-6182

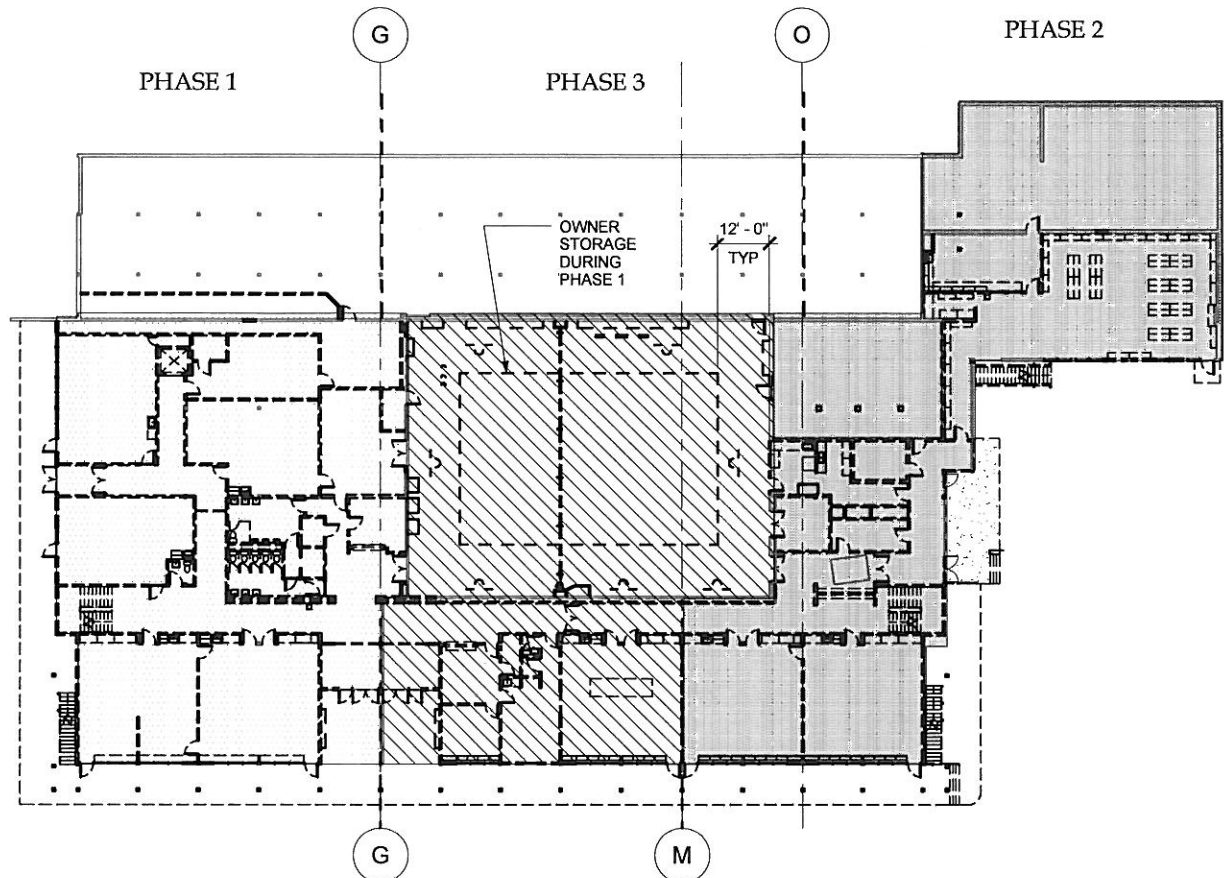
**ENVIORNMENTAL
ENGINEER**
CARSON DORN
712 WEST 12TH STREET
JUNEAU, ALASKA 99801
(907) 586-4447
FAX (907) 586-5917



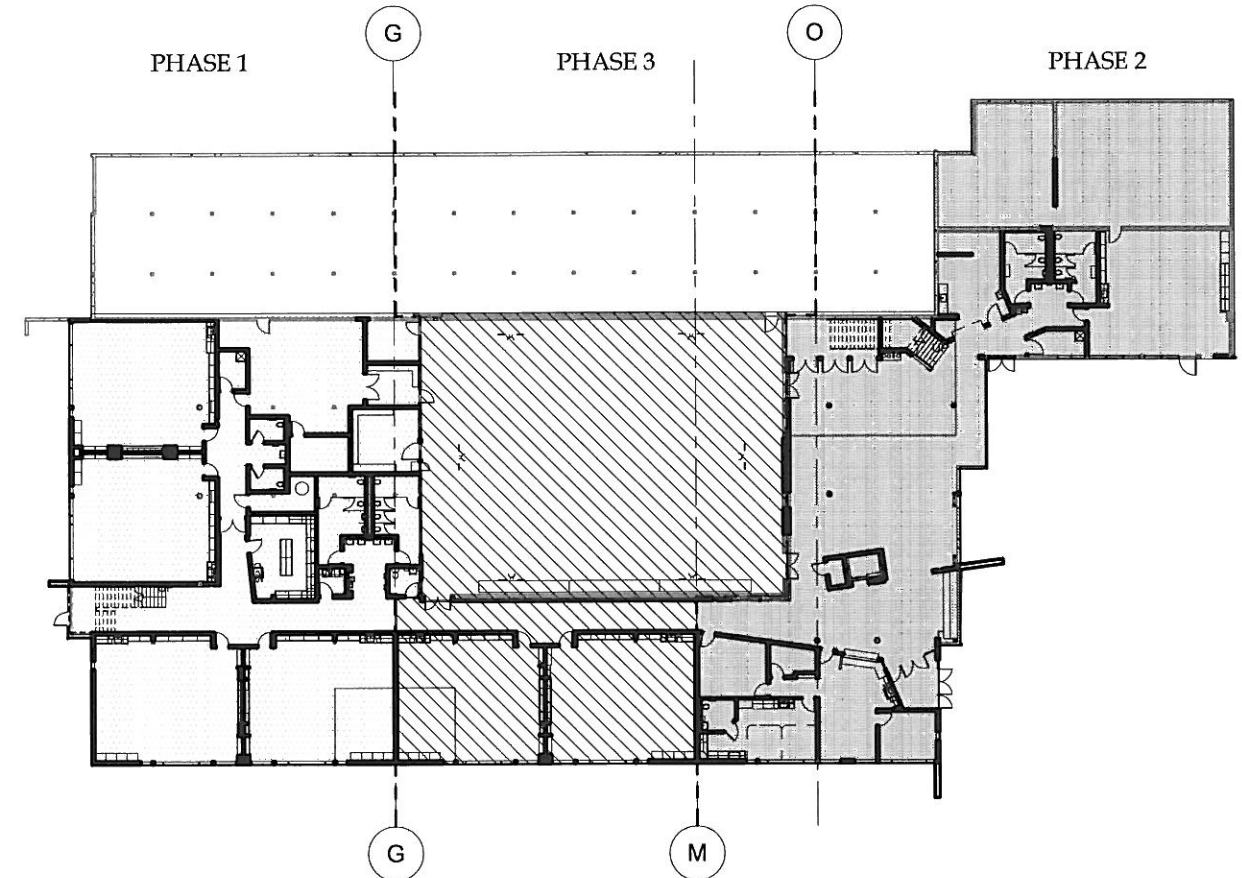
**Jensen
Yorba
Lott
Inc.**

522 West 10th Street
Juneau, Alaska 99801
Phone 907-586-1070
Fax 907-586-3959
jensenyorbalott.com
FILE 10036

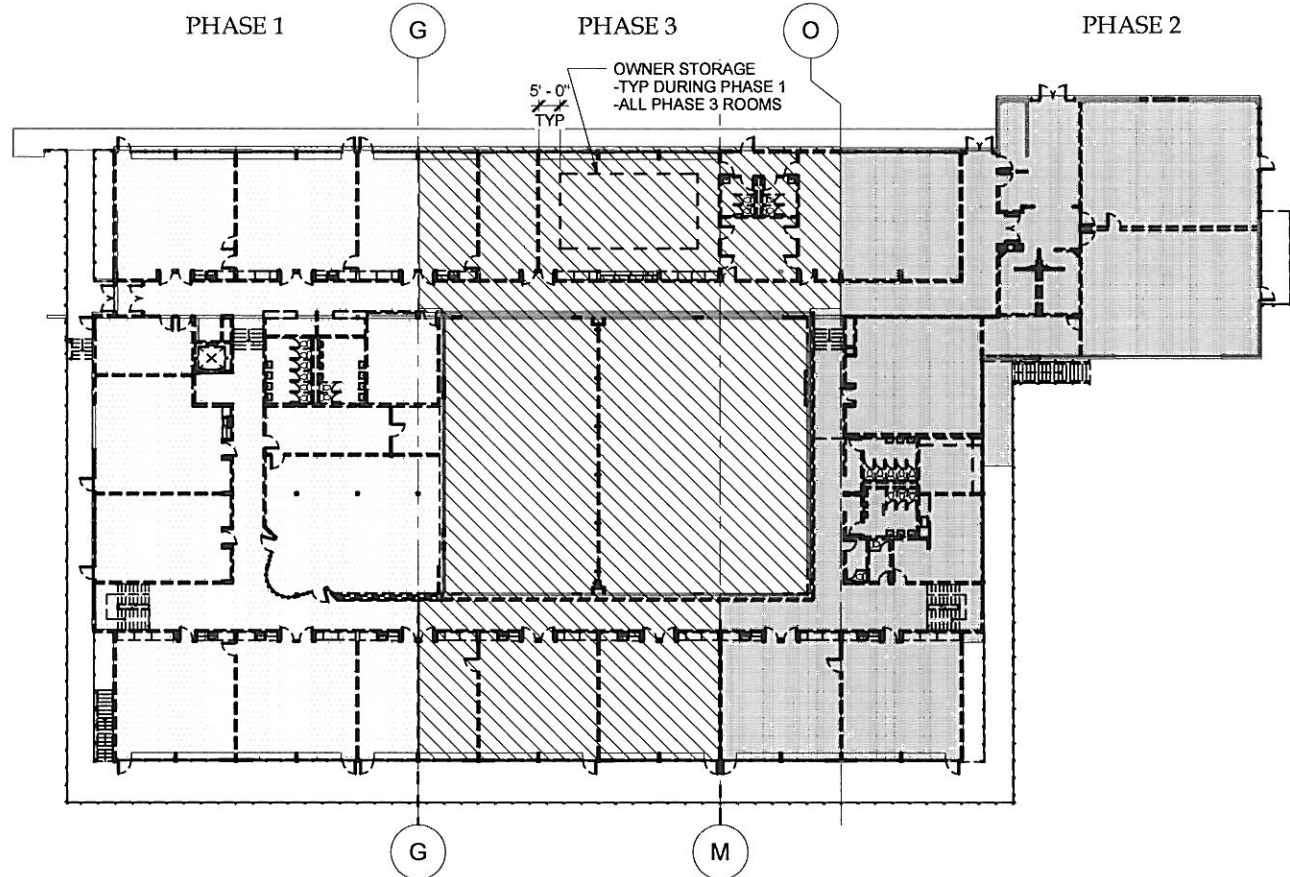
A001



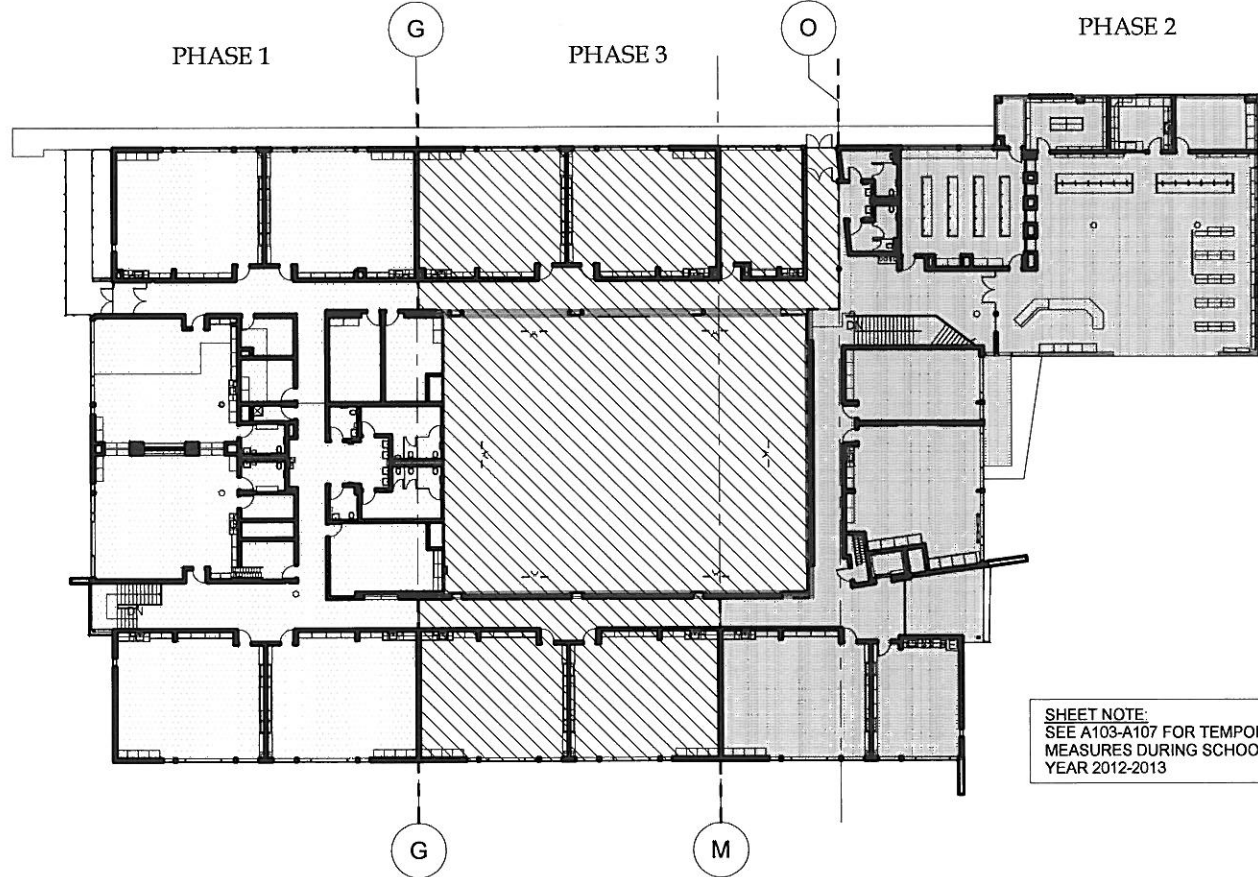
1 PHASING PLAN: FIRST FLOOR - EXISTING



2 PHASING PLAN: FIRST FLOOR



3 PHASING PLAN: SECOND FLOOR - EXISTING



4 PHASING PLAN: SECOND FLOOR

SHEET NOTE:
SEE A103-A107 FOR TEMPORARY
MEASURES DURING SCHOOL
YEAR 2012-2013

**Jensen
Yorba
Lott
Inc.**
522 West 10th Street
Juneau, Alaska 99801
Phone 907-586-1070
Fax 907-586-3959
jensenyorbалott.com

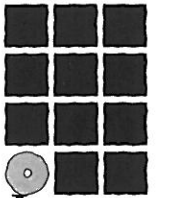


City and Borough of Juneau - Juneau School District
**Auke Bay Elementary
School Renovation**
CBJ Project No. E12-042
Juneau, Alaska

REVISIONS
▲
▲
▲

SHEET TITLE
OVERALL PHASING
PLANS

DATE: December 21, 2011
FILE: 10036



**Jensen
Yorba
Lott
Inc.**

522 West 10th Street
Juneau, Alaska 99801
Phone 907-586-1070
Fax 907-586-3959
jensenyorbалott.com



City and Borough of Juneau - Juneau School District
**Auke Bay Elementary
School Remodel**
CJ Project No. E12-042
Juneau, Alaska

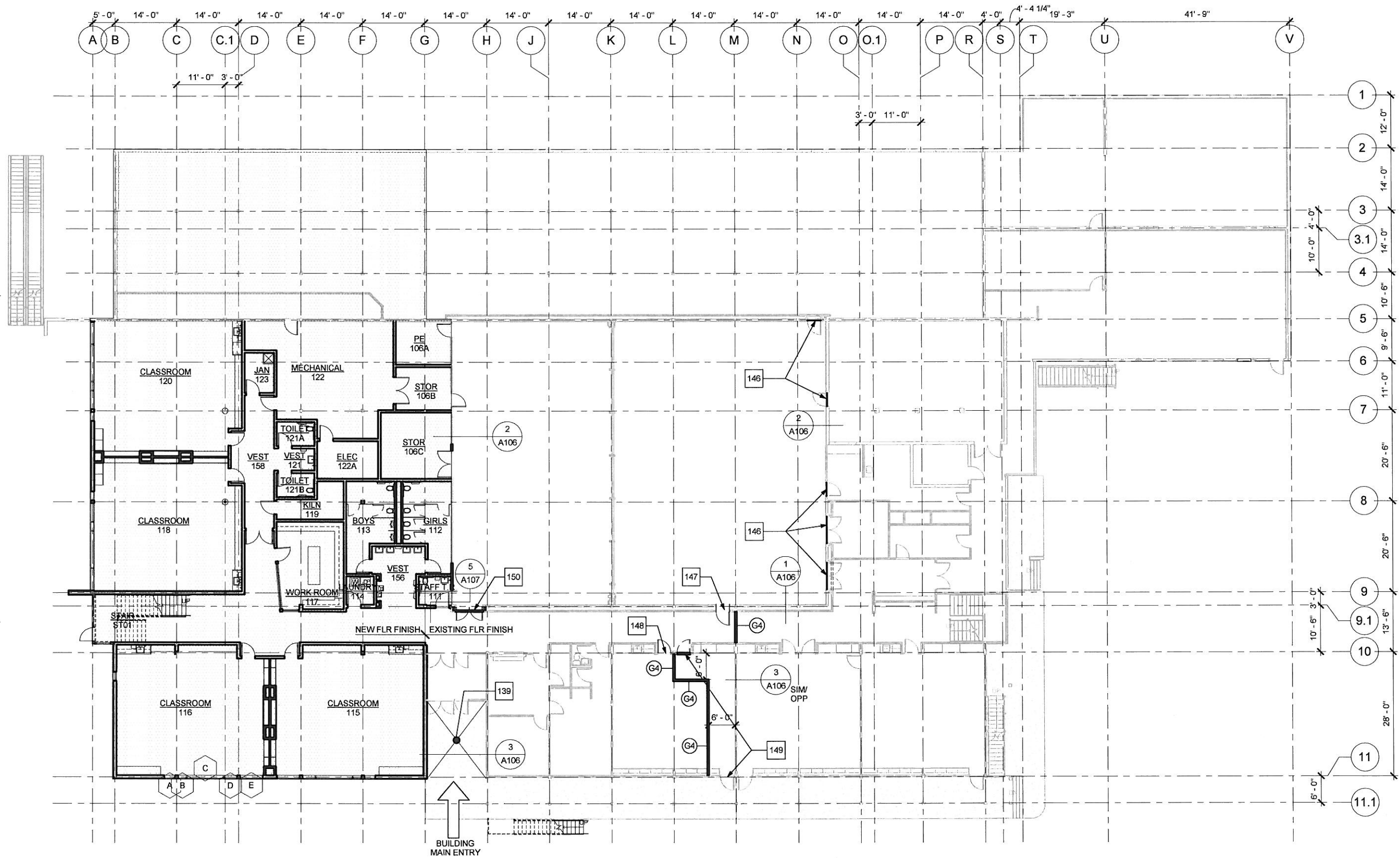
REVISIONS

- ▲
- ▲
- ▲

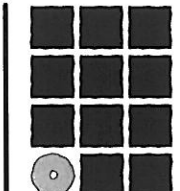
SHEET TITLE
**PHASING PLAN -
FIRST FLOOR PLAN -
PHASE 2**

DATE: October 10, 2011
FILE: 10036

A103

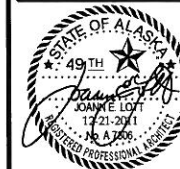


1 PHASING PLAN: FIRST FLOOR PLAN - PHASE 2



**Jensen
Yorba
Lott
Inc.**

522 West 10th Street
Juneau, Alaska 99801
Phone 907-586-1070
Fax 907-586-3959
jensenyorbaltott.com



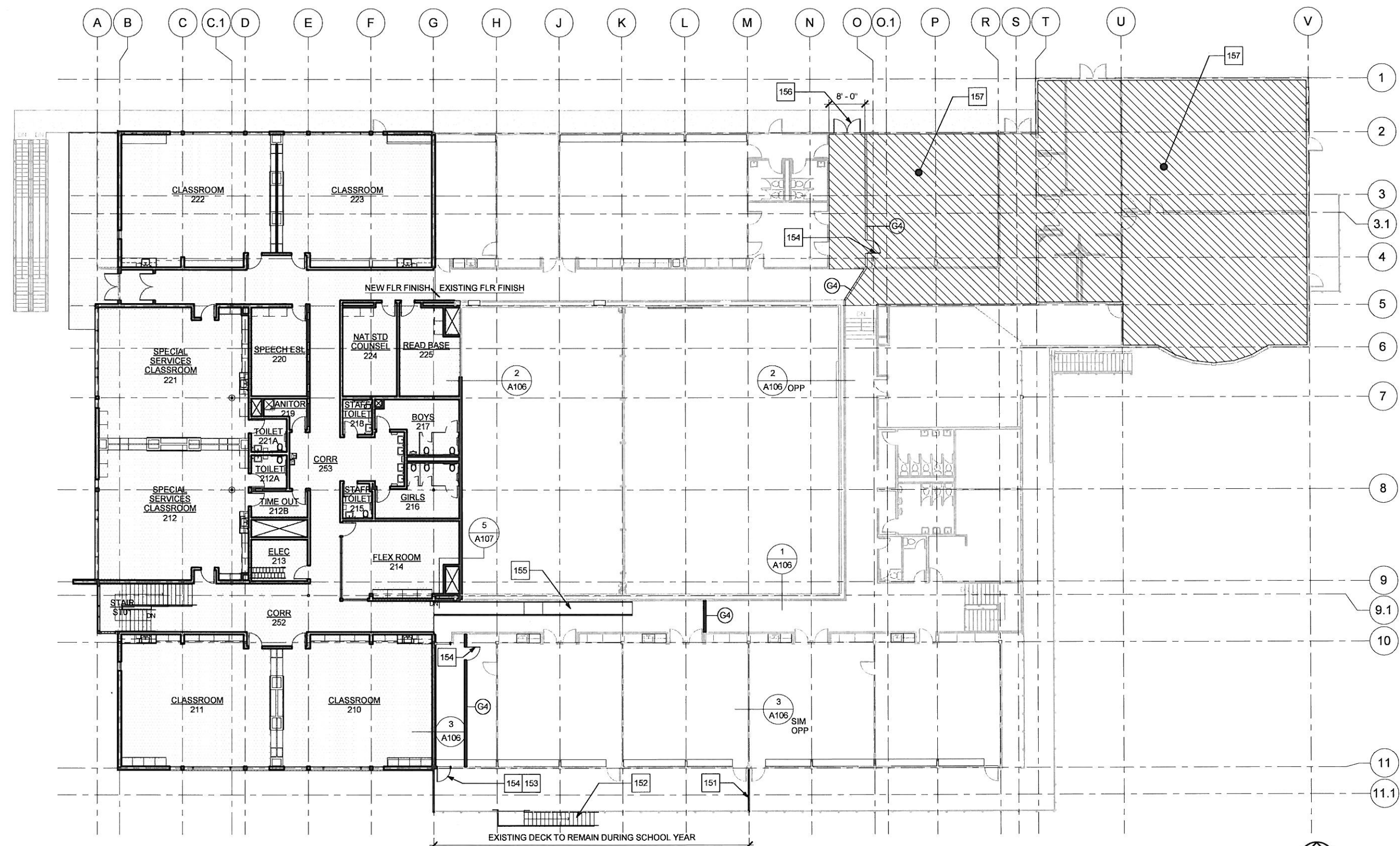
City and Borough of Juneau - Juneau School District
**Auke Bay Elementary
School Remodel**
CBJ Project No. E12-042
Juneau, Alaska

REVISIONS
▲
▲
▲

SHEET TITLE
**PHASING PLAN -
SECOND FLOOR
PLAN - PHASE 2**

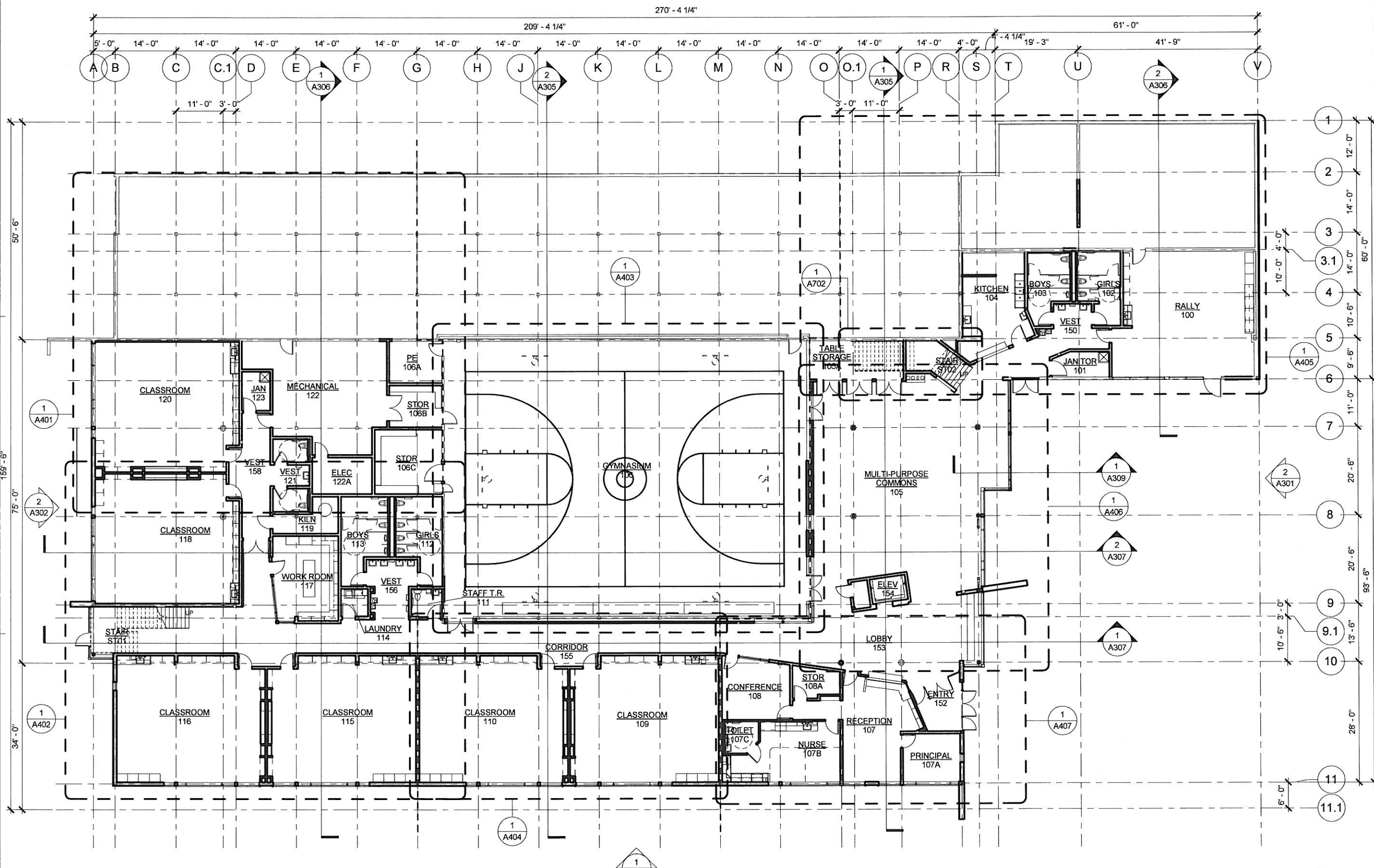
DATE October 10, 2011
FILE 10036

A104



1 PHASING PLAN: SECOND FLOOR PLAN - PHASE 2





Jensen Yorba Lott Inc.
 522 West 10th Street
 Juneau, Alaska 99801
 Phone 907-586-1070
 Fax 907-586-3959
 jensenyorbaltott.com



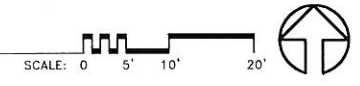
City and Borough of Juneau - Juneau School District
Auke Bay Elementary School Renovation
 CBJ Project No. E12-042
 Juneau, Alaska

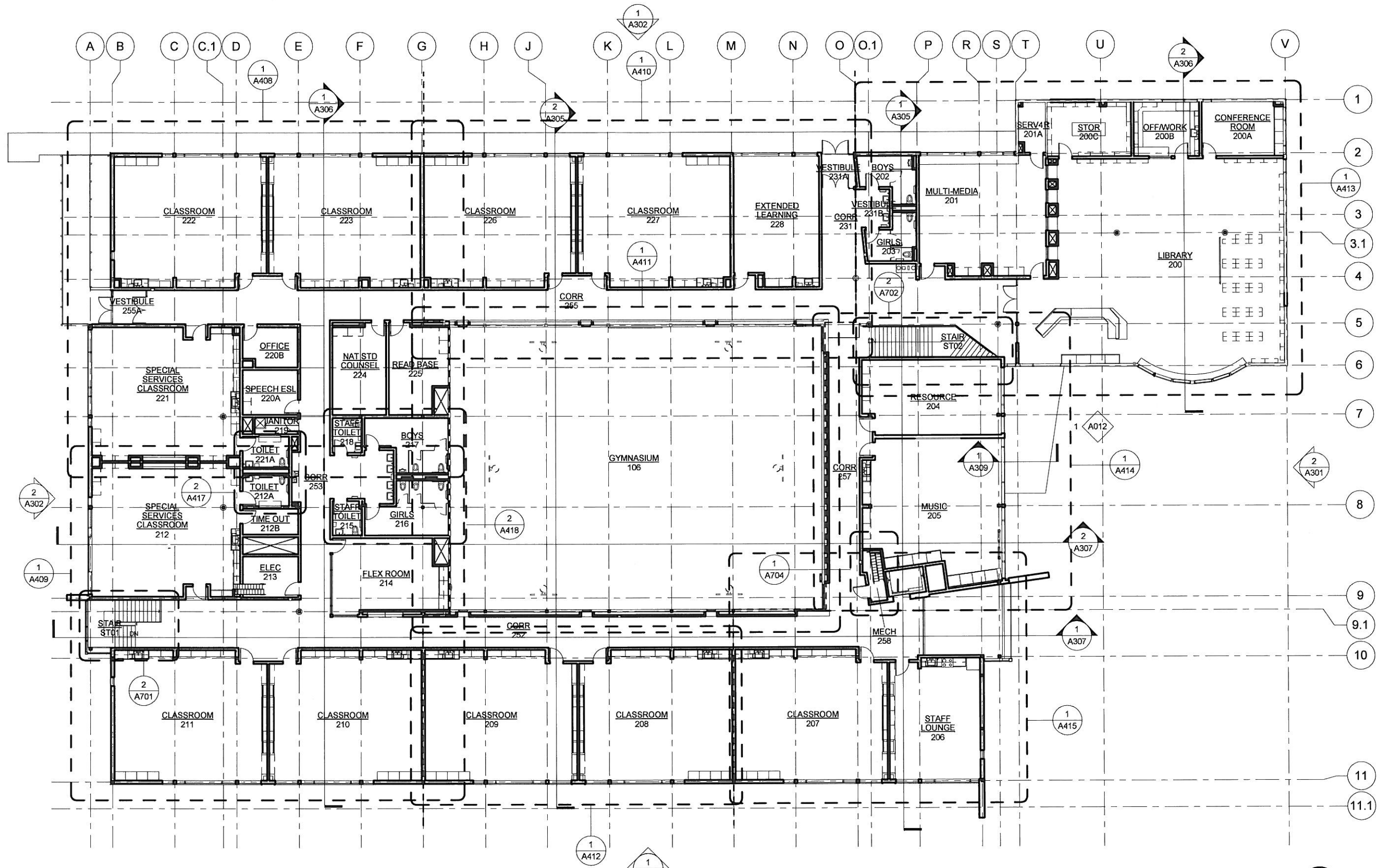
REVISIONS
 ▲
 ▲
 SHEET TITLE
FIRST FLOOR PLAN

DATE: December 21, 2011
 FILE: 10036

A201

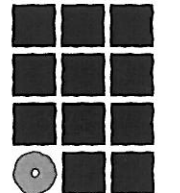
1 FIRST FLOOR PLAN





1 SECOND FLOOR PLAN

SCALE: 0 5' 10' 20'



**Jensen
Yorba
Lott
Inc.**

522 West 10th Street
Juneau, Alaska 99801
Phone 907-586-1070
Fax 907-586-3959
jensenyorbaltott.com

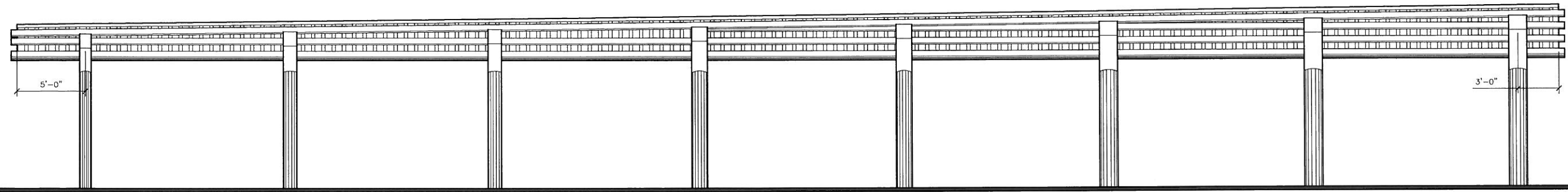


City and Borough of Juneau - Juneau School District
**Auke Bay Elementary
School Renovation**
CBJ Project No. E12-042
Juneau, Alaska

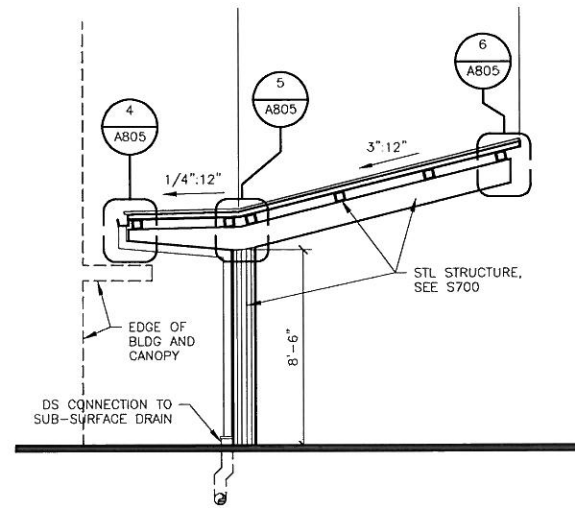
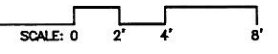
REVISIONS
 ▲
 ▲
 ▲
 SHEET TITLE
**SECOND FLOOR
 PLAN**

DATE: December 21, 2011
 FILE: 10036

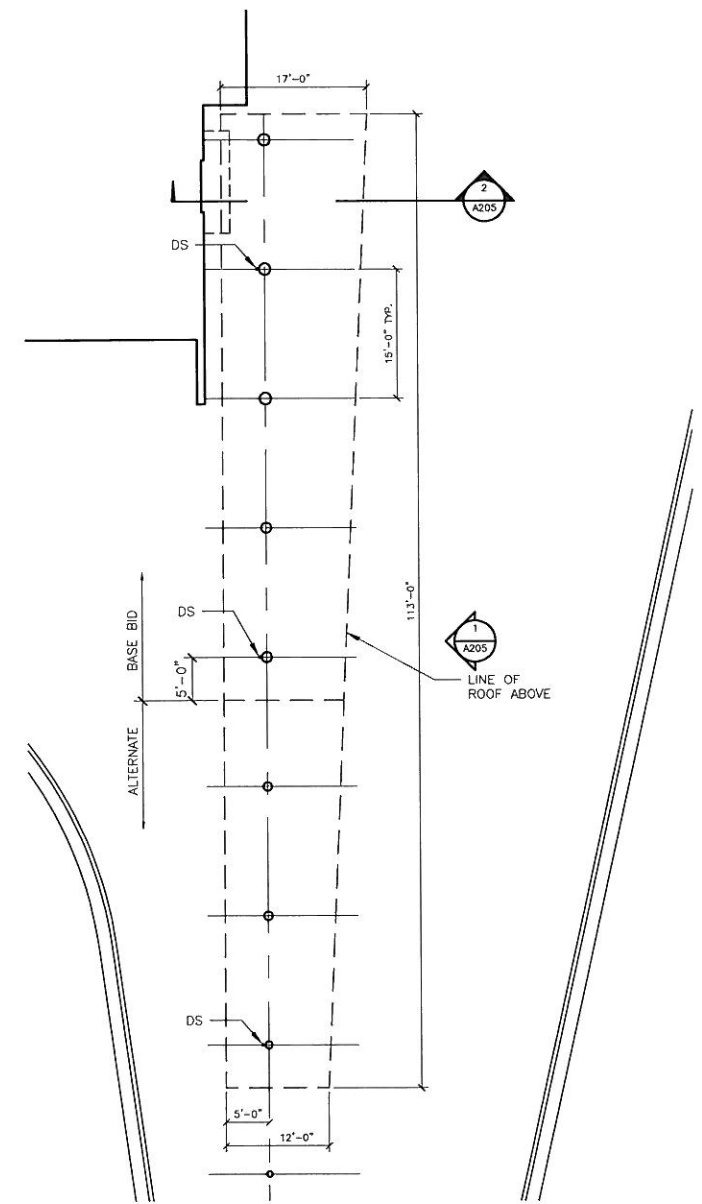
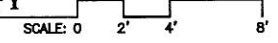
A202



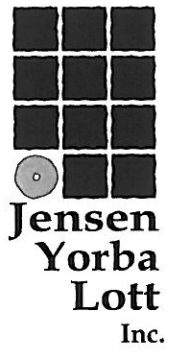
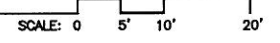
1 ELEVATION



2 SECTION @ CANOPY



3 OVERALL PLAN



Jensen
Yorba
Lott
Inc.
522 West 10th Street
Juneau, Alaska 99801
phone 907-586-1070
fax 907-586-3959
jensenyorbалott.com



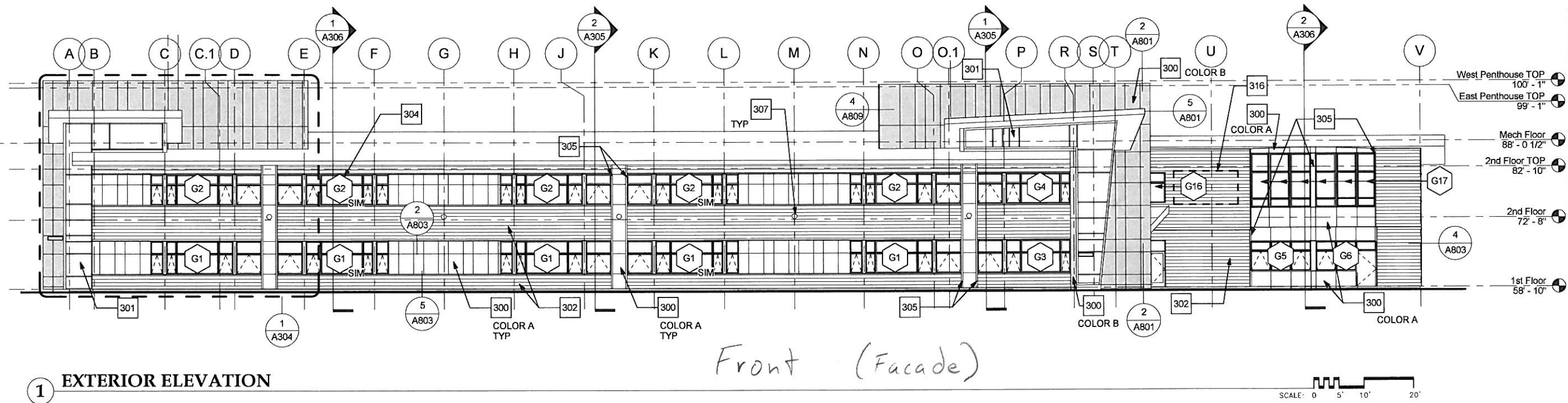
City and Borough of Juneau - Juneau School District
Auke Bay Elementary
School Renovation
CBJ Project No. E12-042
Juneau, Alaska

REVISIONS
△
△
△

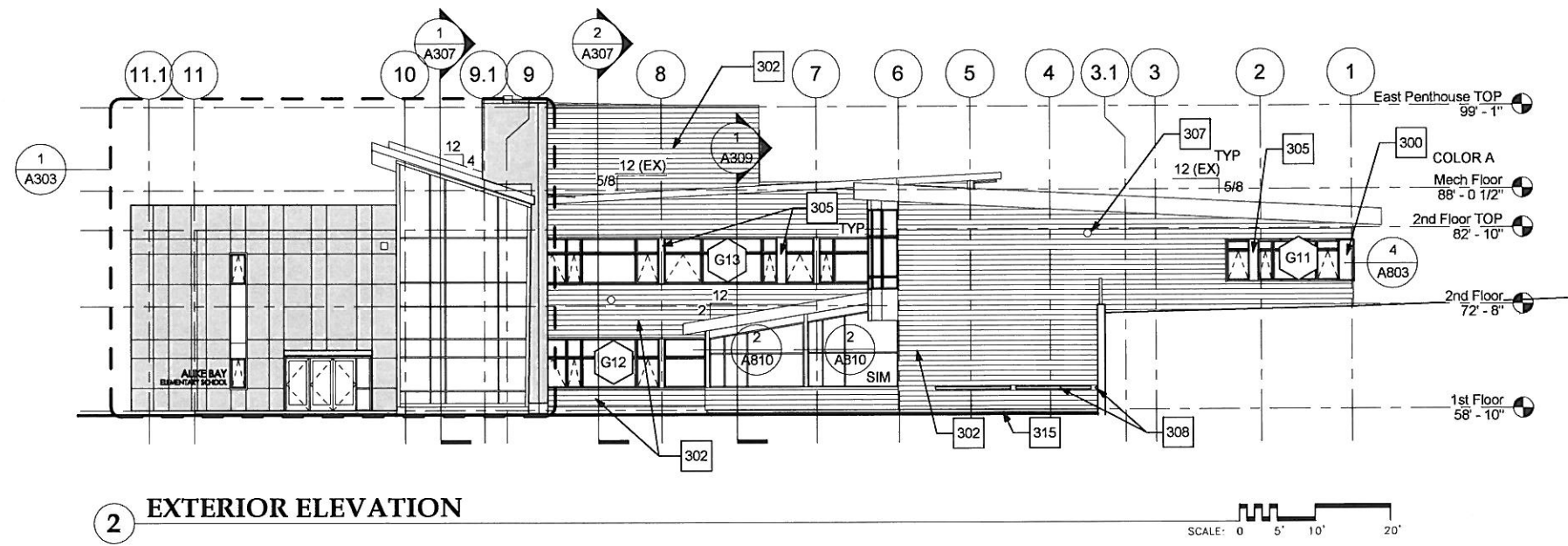
SHEET TITLE
CANOPY PLANS

DATE: December 21, 2011
FILE: 10036

A205



1 EXTERIOR ELEVATION



2 EXTERIOR ELEVATION

Jensen Yorba Lott Inc.
 522 West 10th Street
 Juneau, Alaska 99801
 Phone 907-586-1070
 Fax 907-586-3959
 jensenyorbaltott.com



City and Borough of Juneau - Juneau School District
Auke Bay Elementary School Renovation
 CBJ Project No. E12-042
 Juneau, Alaska

REVISIONS
▲
▲
▲

SHEET TITLE
 EXTERIOR ELEVATIONS

DATE: December 21, 2011
 FILE: 10036

A301